

**Dallas County, Iowa**

Horizontal Datum: **NAD 83(NA2011)** - Vertical Datum: **NAVD 1988**  
Iowa State Plane South Zone (1402)  
Iowa Regional Coordinate System, Zone 8, Ames-Des Moines TM  
US Survey Feet  
**2018**

Point Name: **172**

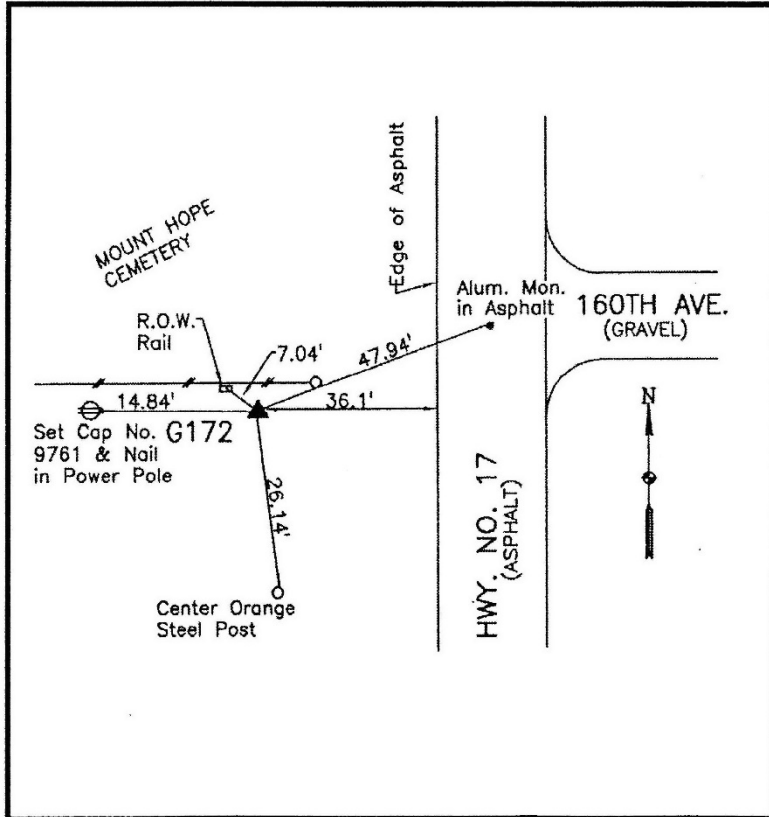
**Designation:** G172 (set by WHKS in 2001)

NAD 83(NA2011) Latitude: **N41°51'48.33377"** Longitude: **W93°48'57.22226"**  
NAVD 88 Ortho Height: **1033.017sft** Ellip. Ht: **935.045sft** **Geoid12B**

**Iowa South Zone (1402)** Northing: **679088.454sft** Easting: **1554365.731sft**  
Mapping Angle: **-0°12'29"** Combination Scale Factor: **0.99997059**

**IaRCS Zone 8** Northing: **7587891.633sft** Easting: **18472969.289sft**  
Mapping Angle: **-0°03'58"** Combination Scale Factor: **0.99998922**

**Monument Type:** 5/8" dia. x 6'-0" long alum. rod with cap and NGS style access cover.



Description:

Placed 5/8" X 6' - 0" Long  
Aluminum Rod with Cap  
Stamped G172 and NGS Style  
Access Cover 1" Deep.

Location:

West side Iowa Highway 17 at  
northeast corner of Dallas  
County at south fence line of  
Mount Hope Cemetery (Boone  
County). Section 1, T81N,  
R26W.