

**Dallas County, Iowa**  
 Horizontal Datum: **NAD 83(NA2011)** - Vertical Datum: **NAVD 1988**  
 Iowa State Plane South Zone (1402)  
 Iowa Regional Coordinate System, Zone 8, Ames-Des Moines TM  
 US Survey Feet  
**2018**

Point Name: **173**

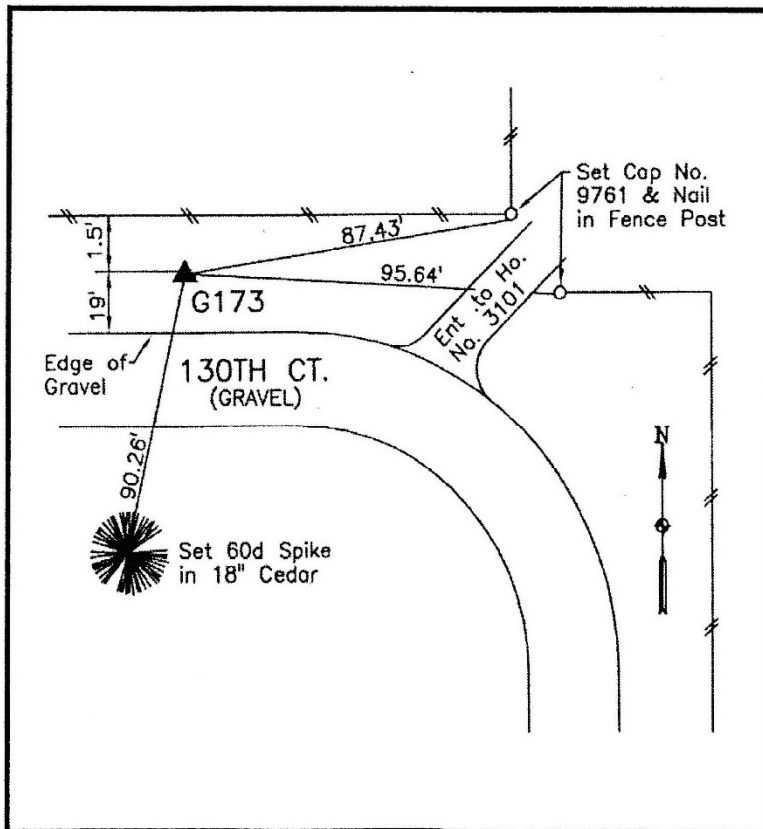
**Designation:** G173 (set by WHKS in 2001)

NAD 83(NA2011) Latitude: **N41°51'11.94059"** Longitude: **W93°52'26.37197"**  
 NAVD 88 Ortho Height: **989.792sft** Ellip. Ht: **892.414sft** **Geoid12B**

**Iowa South Zone (1402)** Northing: **675467.358sft** Easting: **1538524.115sft**  
 Mapping Angle: **-0°14'47"** Combination Scale Factor: **0.99997060**

**IaRCS Zone 8** Northing: **7584231.318sft** Easting: **18457136.352sft**  
 Mapping Angle: **-0°06'18"** Combination Scale Factor: **0.99999252**

**Monument Type:** 5/8" dia. x 6'-0" long alum. rod with cap and NGS style access cover.



Description:

Placed 5/8" X 6' - 0" Long Aluminum Rod with Cap Stamped G173 and NGS Style Access Cover 3 " Deep.

Location:

North side of 130th Court in Section 4, T81N, R26W at curve in road 60 feet east of driveway to address 3101 130th Court.