

Dallas County, Iowa

Horizontal Datum: **NAD 83(NA2011)** - Vertical Datum: **NAVD 1988**
Iowa State Plane South Zone (1402)
Iowa Regional Coordinate System, Zone 8, Ames-Des Moines TM
US Survey Feet
2018

Point Name: **174**

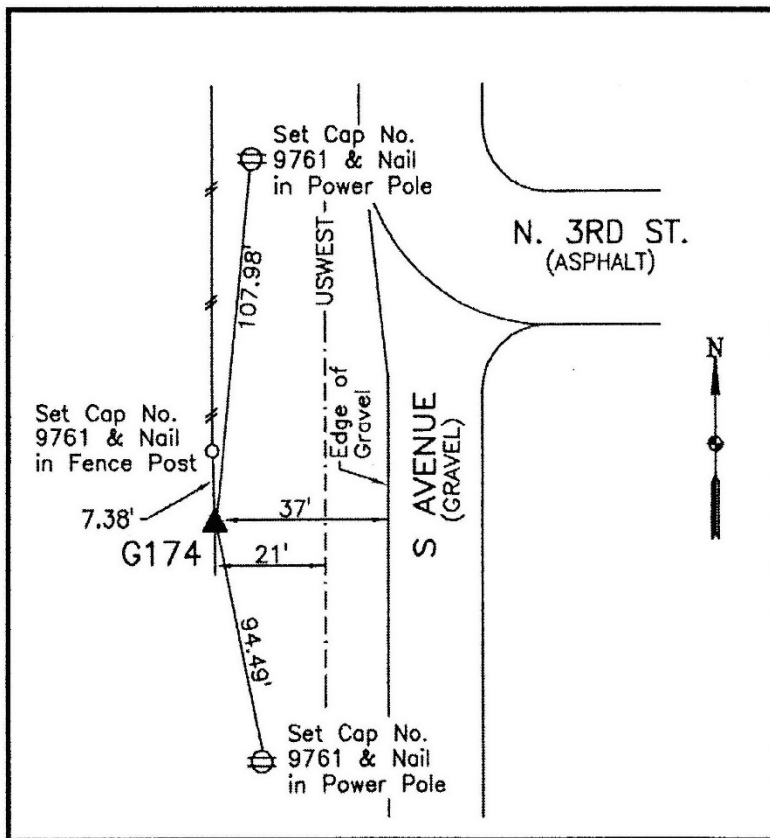
Designation: G174 (set by WHKS in 2001)

NAD 83(NA2011) Latitude: **N41°51'37.80121"** Longitude: **W93°55'52.53553"**
NAVD 88 Ortho Height: **1054.672sft** Ellip. Ht: **958.389sft** **Geoid12B**

Iowa South Zone (1402) Northing: **678157.279sft** Easting: **1522934.889sft**
Mapping Angle: **-0°17'03"** Combination Scale Factor: **0.99996888**

IaRCS Zone 8 Northing: **7586882.891sft** Easting: **18441540.203sft**
Mapping Angle: **-0°08'36"** Combination Scale Factor: **0.99999117**

Monument Type: 5/8" dia. x 6'-0" long alum. rod with cap and NGS style access cover.



Description:

Placed 5/8" X 6' - 0" Long Aluminum Rod with Cap Stamped G174 and NGS Style Access Cover 4" Deep.

Location:

Southwest corner of intersection of S Avenue and N. Third Street (City of Woodward) in Section 1, T81N, R27W near the south end of the west right of way fence.