

Dallas County, Iowa

Horizontal Datum: **NAD 83(NA2011)** - Vertical Datum: **NAVD 1988**
Iowa State Plane South Zone (1402)
Iowa Regional Coordinate System, Zone 8, Ames-Des Moines TM
US Survey Feet
2018

Point Name: **176**

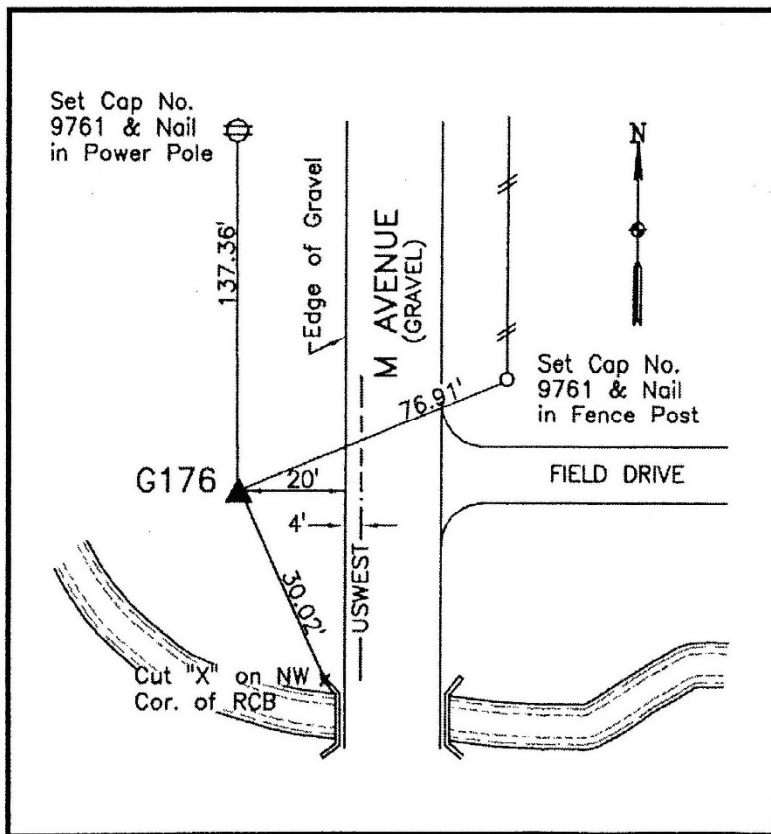
Designation: G176 (set by WHKS in 2001)

NAD 83(NA2011) Latitude: **N41°51'38.52871"** Longitude: **W94°02'53.30877"**
NAVD 88 Ortho Height: **945.439sft** Ellip. Ht: **851.027sft** **Geoid12B**

Iowa South Zone (1402) Northing: **678410.175sft** Easting: **1491095.435sft**
Mapping Angle: **-0°21'40"** Combination Scale Factor: **0.99997405**

IaRCS Zone 8 Northing: **7587057.790sft** Easting: **18409699.436sft**
Mapping Angle: **-0°13'16"** Combination Scale Factor: **1.00000171**

Monument Type: 5/8" dia. x 6'-0" long alum. rod with cap and NGS style access cover.



Description:

Placed 5/8" X 6' - 0" Long Aluminum Rod with Cap Stamped G176 and NGS Style Access Cover 3 " Deep.

Location:

West side M Avenue and north side of drainage way in Section 1, T81N, R28W 0.2 mile south of north county line.