

Dallas County, Iowa

Horizontal Datum: **NAD 83(NA2011)** - Vertical Datum: **NAVD 1988**
Iowa State Plane South Zone (1402)
Iowa Regional Coordinate System, Zone 8, Ames-Des Moines TM
US Survey Feet
2018

Point Name: **177**

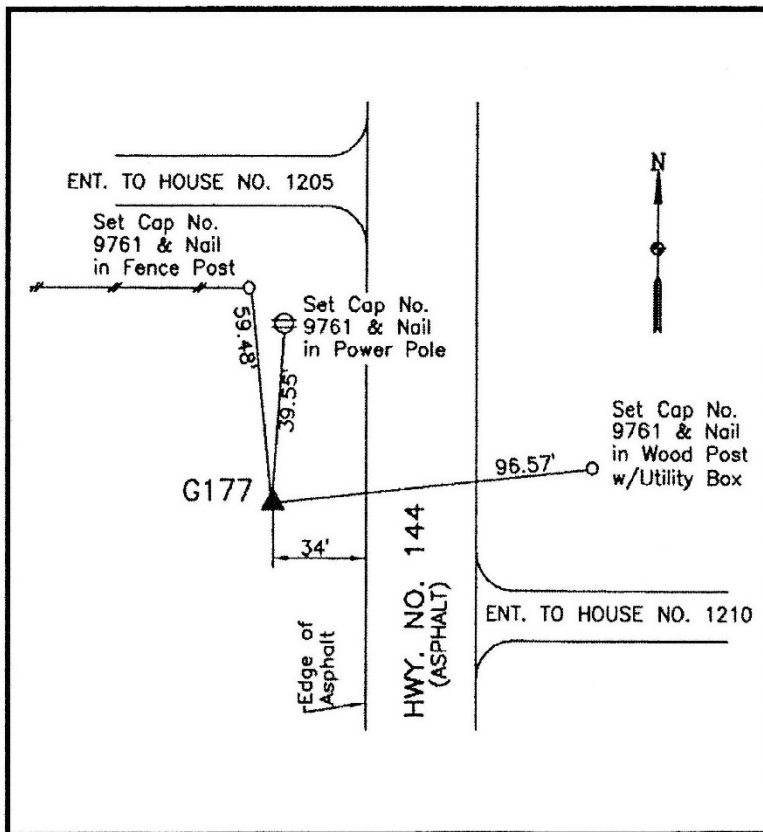
Designation: G177 (set by WHKS in 2001)

NAD 83(NA2011) Latitude: **N41°51'43.89624"** Longitude: **W94°06'22.73932"**
NAVD 88 Ortho Height: **1003.229sft** Ellip. Ht: **909.785sft** **Geoid12B**

Iowa South Zone (1402) Northing: **679058.656sft** Easting: **1475251.756sft**
Mapping Angle: **-0°23'58"** Combination Scale Factor: **0.99997154**

IaRCS Zone 8 Northing: **7587667.683sft** Easting: **18393853.760sft**
Mapping Angle: **-0°15'36"** Combination Scale Factor: **1.00000246**

Monument Type: 5/8" dia. x 6'-0" long alum. rod with cap and NGS style access cover.



Description:

Placed 5/8" X 6' - 0" Long
Aluminum Rod with Cap
Stamped G177 and NGS Style
Access Cover 4 " Deep.

Location:

West side J Avenue (Highway
144) in Section 4, T81N,
R28W, opposite driveway to
address 1210 J Avenue just
south of north county line.