

Dallas County, Iowa
Horizontal Datum: **NAD 83(NA2011)** - Vertical Datum: **NAVD 1988**
Iowa State Plane South Zone (1402)
Iowa Regional Coordinate System, Zone 8, Ames-Des Moines TM
US Survey Feet
2018

Point Name: **178**

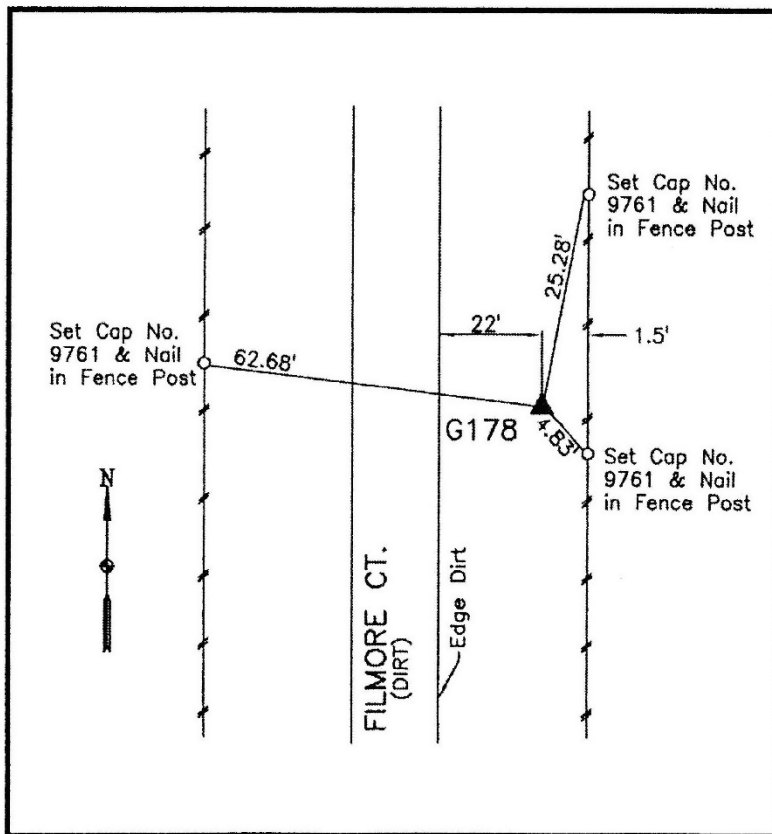
Designation: G178 (set by WHKS in 2001)

NAD 83(NA2011) Latitude: **N41°51'31.16937"** Longitude: **W94°10'25.59340"**
NAVD 88 Ortho Height: **942.513sft** Ellip. Ht: **850.025sft** **Geoid12B**

Iowa South Zone (1402) Northing: **677905.638sft** Easting: **1456865.688sft**
Mapping Angle: **-0°26'38"** Combination Scale Factor: **0.99997369**

IaRCS Zone 8 Northing: **7586470.002sft** Easting: **18375469.928sft**
Mapping Angle: **-0°18'18"** Combination Scale Factor: **1.00001016**

Monument Type: 5/8" dia. x 6'-0" long alum. rod with cap and NGS style access cover.



Description:

Placed 5/8" X 6' - 0" Long Aluminum Rod with Cap Stamped G178 and NGS Style Access Cover 4" Deep.

Location:

East side Filmore Court in Section 1, T81N, R29W, opposite north gate to gravel at property 0.7 mile north of 130th Street.