

Dallas County, Iowa

Horizontal Datum: **NAD 83(NA2011)** - Vertical Datum: **NAVD 1988**
Iowa State Plane South Zone (1402)
Iowa Regional Coordinate System, Zone 8, Ames-Des Moines TM
US Survey Feet
2018

Point Name: **179**

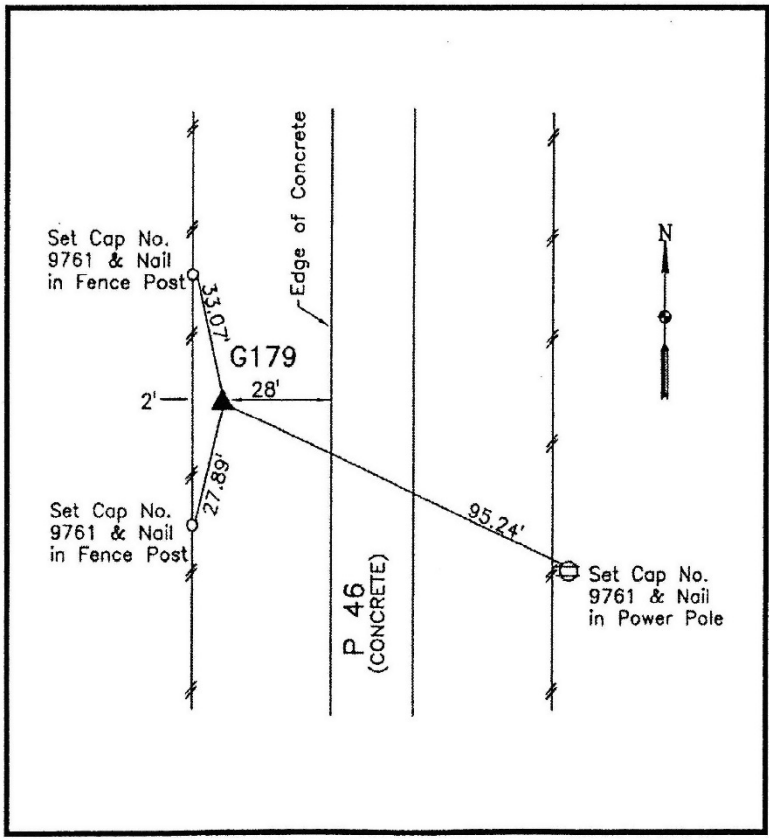
Designation: G179 (set by WHKS in 2001)

NAD 83(NA2011) Latitude: **N41°51'42.95923"** Longitude: **W94°13'19.83274"**
NAVD 88 Ortho Height: **978.993sft** Ellip. Ht: **887.254sft** **Geoid12B**

Iowa South Zone (1402) Northing: **679204.824sft** Easting: **1443690.745sft**
Mapping Angle: **-0°28'33"** Combination Scale Factor: **0.99997257**

IaRCS Zone 8 Northing: **7587737.370sft** Easting: **18362291.378sft**
Mapping Angle: **-0°20'14"** Combination Scale Factor: **1.00001233**

Monument Type: 5/8" dia. x 6'-0" long alum. rod with cap and NGS style access cover.



Description:
Placed 5/8" X 6' - 0" Long
Aluminum Rod with Cap
Stamped G179 and NGS Style
Access Cover 5" Deep.

Location:
West side of D Avenue (P46)
in Section 4, T81N, R29W, 0.1
mile south of north county line.

This document was prepared by Dan Corbin, Inc. on March 9, 2018 for Dallas County, Iowa.