

**Dallas County, Iowa**  
Horizontal Datum: **NAD 83(NA2011)** - Vertical Datum: **NAVD 1988**  
Iowa State Plane South Zone (1402)  
Iowa Regional Coordinate System, Zone 8, Ames-Des Moines TM  
US Survey Feet  
**2018**

Point Name: **181**

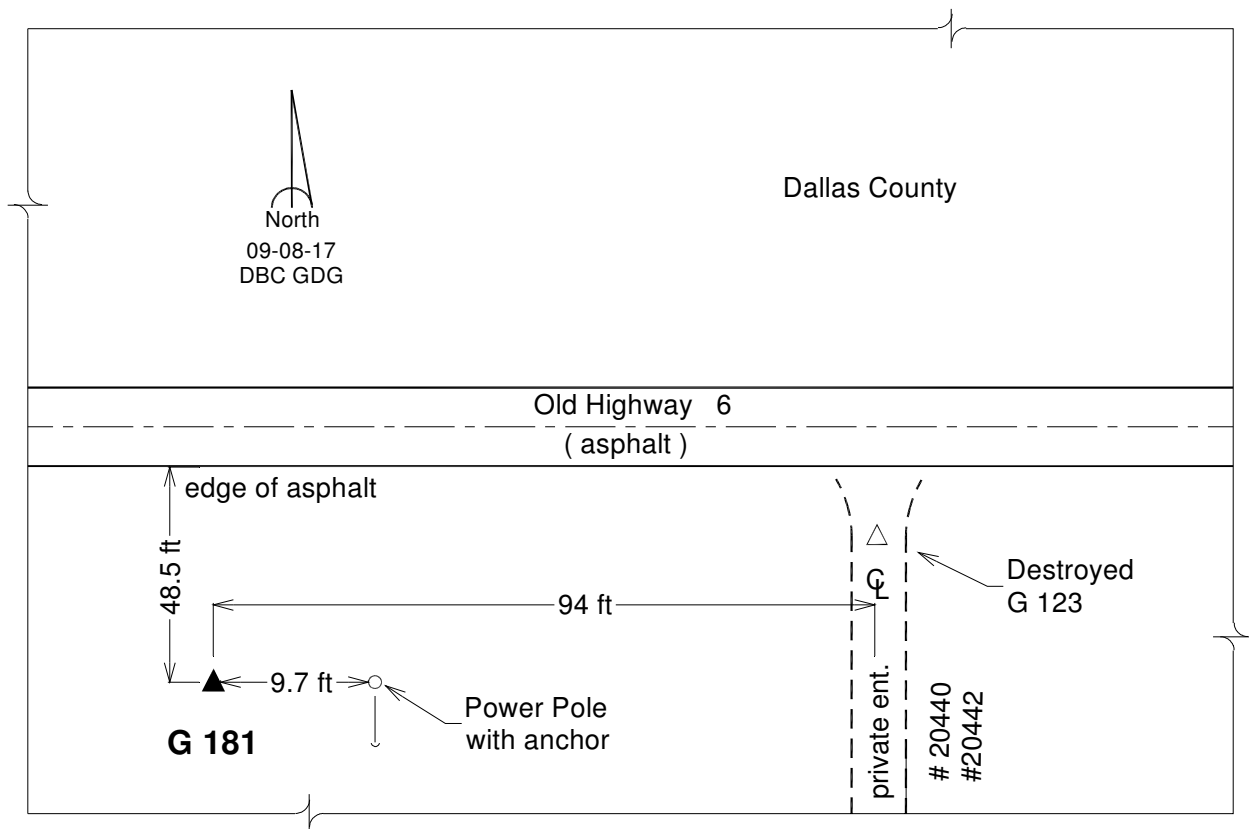
**Designation:** G181 (set by DCI in 2017)

NAD 83(NA2011) Latitude: **N41°36'00.99975"** Longitude: **W94°04'48.11061"**  
NAVD 88 Ortho Height: **1029.706sft** Ellip. Ht: **931.014sft** **Geoid12B**

**Iowa South Zone (1402)** Northing: **583571.724sft** Easting: **1481775.651sft**  
Mapping Angle: **-0°22'55"** Combination Scale Factor: **0.99992820**

**IaRCS Zone 8** Northing: **7492191.926sft** Easting: **18400611.476sft**  
Mapping Angle: **-0°14'29"** Combination Scale Factor: **0.99999986**

**Monument Type:** Berntsen Top Security Rod monument (3/4"dia x 6ft.+ ) with 2-1/2" aluminum survey cap and permanent magnet encased in a 5" dia. PVC pipe with NGS style alum. access cover.



*This document was prepared by Dan Corbin, Inc. on March 9, 2018 for Dallas County, Iowa.*