

Dallas County, Iowa
Horizontal Datum: **NAD 83(NA2011)** - Vertical Datum: **NAVD 1988**
Iowa State Plane South Zone (1402)
Iowa Regional Coordinate System, Zone 8, Ames-Des Moines TM
US Survey Feet
2018

Point Name: **182**

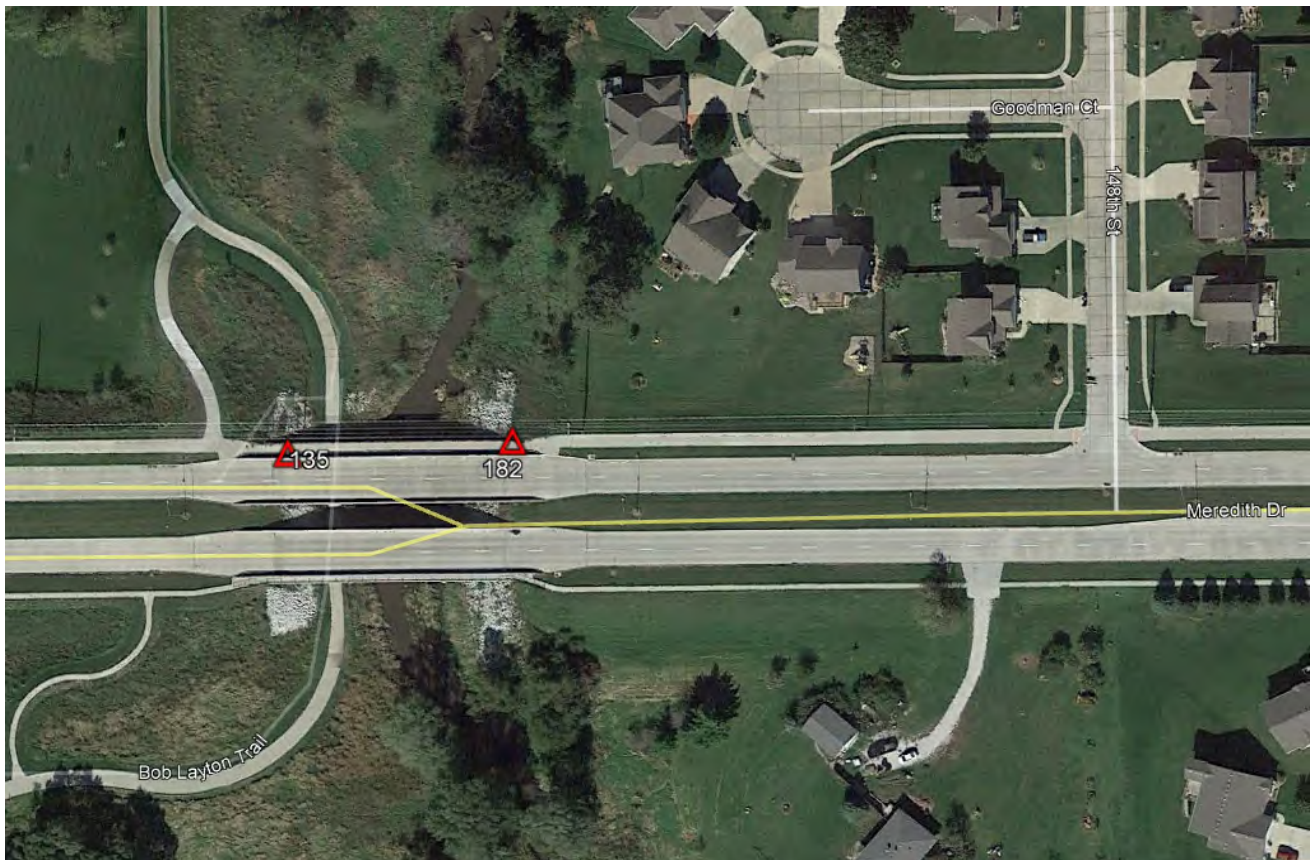
Designation: Urbandale BM No. 92 (established in 2013)

NAD 83(NA2011) Latitude: **N41°38'38.10004"** Longitude: **W93°49'28.17465"**
NAVD 88 Ortho Height: **911.810sft** Ellip. Ht: **810.772sft** **Geoid12B**

Iowa South Zone (1402) Northing: **599109.384sft** Easting: **1551725.249sft**
Mapping Angle: **-0°12'49"** Combination Scale Factor: **0.99993953**

IaRCS Zone 8 Northing: **7507903.191sft** Easting: **18470526.900sft**
Mapping Angle: **-0°04'18"** Combination Scale Factor: **0.99999531**

Monument Type: A brass plug set in bike trail on bridge at northeast corner.
In the City of Urbandale, Dallas Co. Located on the northeast corner of bridge on barrier wall over Walnut Creek on Meredith Drive, Sec 13, T79N, R26W.



This document was prepared by Dan Corbin, Inc. on March 9, 2018 for Dallas County, Iowa.