

Dallas County, Iowa
 Horizontal Datum: **NAD 83(NA2011)** - Vertical Datum: **NAVD 1988**
 Iowa State Plane South Zone (1402)
 Iowa Regional Coordinate System, Zone 8, Ames-Des Moines TM
 US Survey Feet
2018

Point Name: **2004**

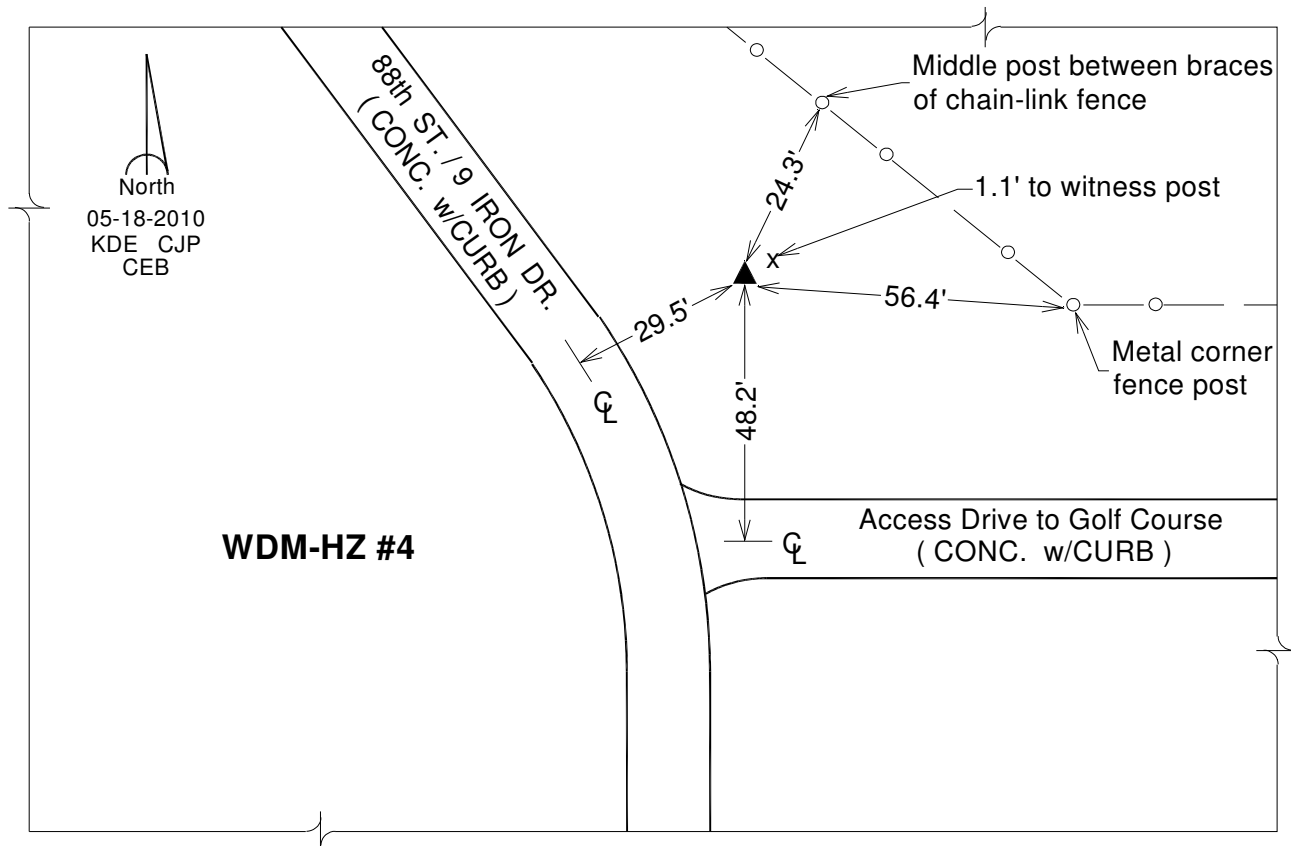
Designation: WDM-HZ #4 (set by DCI in 2010)

NAD 83(NA2011) Latitude: **N41°35'27.76678"** Longitude: **W93°49'40.74466"**
 NAVD 88 Ortho Height: **1012.400sft** Ellip. Ht: **911.059sft** Geoid**12B**

Iowa South Zone (1402) Northing: **579848.235sft** Easting: **1550698.258sft**
 Mapping Angle: **-0°12'58"** Combination Scale Factor: **0.99992804**

IaRCS Zone 8 Northing: **7488638.413sft** Easting: **18469547.631sft**
 Mapping Angle: **-0°04'26"** Combination Scale Factor: **0.99999059**

Monument Type: Berntsen Top Security Rod monument (3/4"dia x 9ft.+) with 2-1/2" aluminum survey cap and permanent magnet encased in a 5" dia. PVC pipe with NGS style alum. access cover.



This document was prepared by Dan Corbin, Inc. on March 9, 2018 for Dallas County, Iowa.