

Dallas County, Iowa
 Horizontal Datum: **NAD 83(NA2011)** - Vertical Datum: **NAVD 1988**
 Iowa State Plane South Zone (1402)
 Iowa Regional Coordinate System, Zone 8, Ames-Des Moines TM
 US Survey Feet
2018

Point Name: **2007**

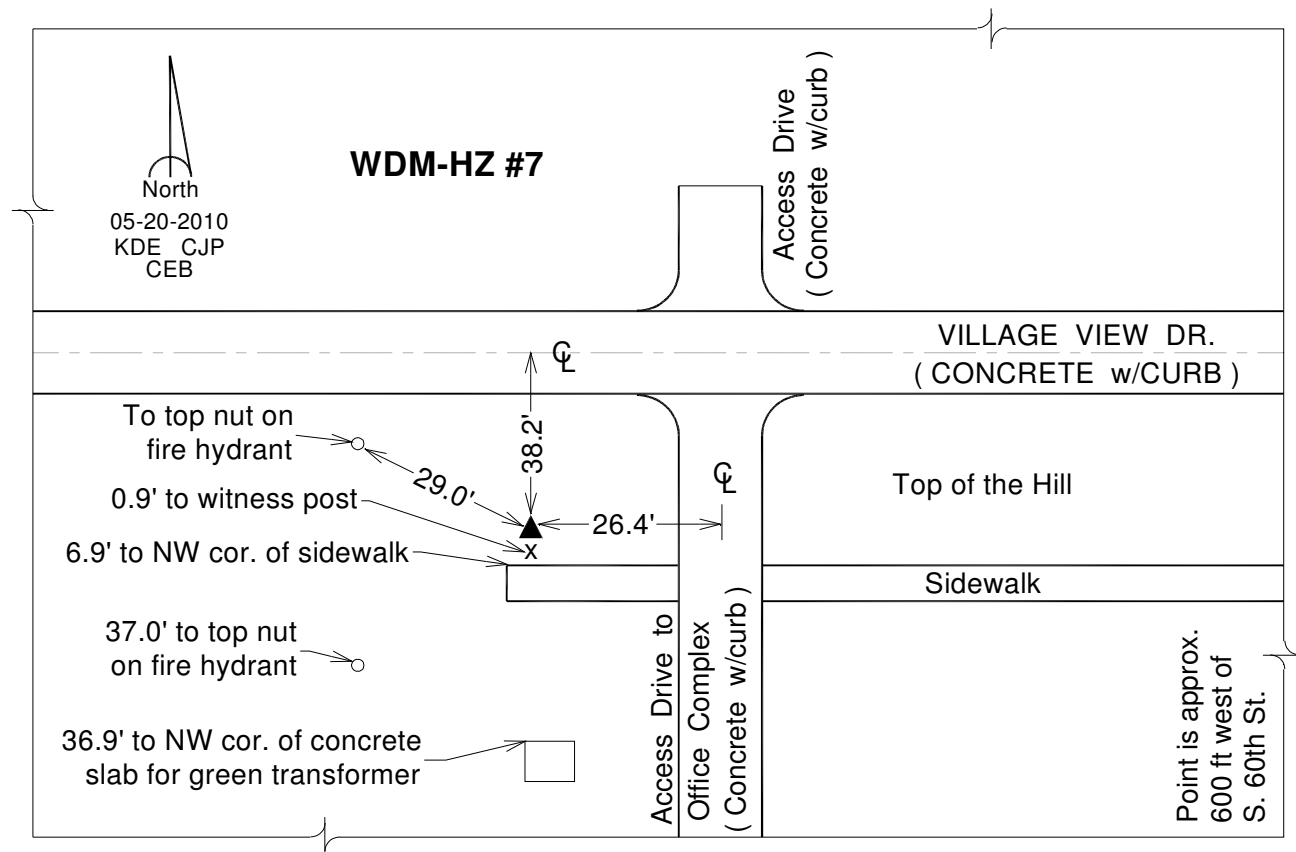
Designation: WDM-HZ #7 (set by DCI in 2010)

NAD 83(NA2011) Latitude: **N41°33'49.34016"** Longitude: **W93°47'34.49623"**
 NAVD 88 Ortho Height: **956.940sft** Ellip. Ht: **855.210sft** Geoid**12B**

Iowa South Zone (1402) Northing: **569851.773sft** Easting: **1560257.608sft**
 Mapping Angle: **-0°11'35"** Combination Scale Factor: **0.99992758**

IaRCS Zone 8 Northing: **7478665.079sft** Easting: **18479132.383sft**
 Mapping Angle: **-0°03'02"** Combination Scale Factor: **0.99999269**

Monument Type: Berntsen Top Security Rod monument (3/4"dia x 9ft.+) with 2-1/2" aluminum survey cap and permanent magnet encased in a 5" dia. PVC pipe with NGS style alum. access cover.



This document was prepared by Dan Corbin, Inc. on March 9, 2018 for Dallas County, Iowa.