

**Dallas County, Iowa**  
Horizontal Datum: **NAD 83(NA2011)** - Vertical Datum: **NAVD 1988**  
Iowa State Plane South Zone (1402)  
Iowa Regional Coordinate System, Zone 8, Ames-Des Moines TM  
US Survey Feet  
**2018**

Point Name: **2009**

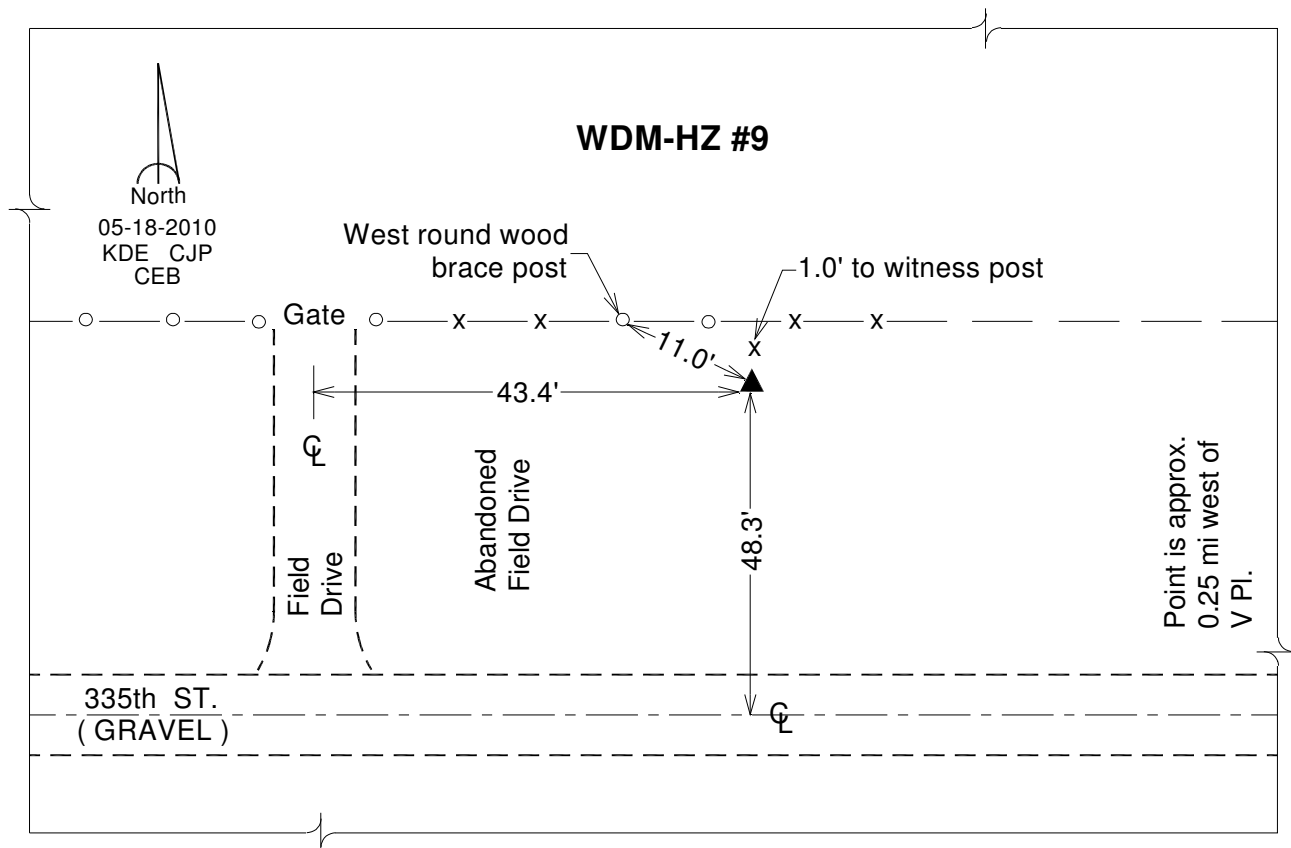
**Designation:** WDM-HZ #9 (set by DCI in 2010)

NAD 83(NA2011) Latitude: **N41°33'08.08099"** Longitude: **W93°52'16.48039"**  
NAVD 88 Ortho Height: **1000.910sft** Ellip. Ht: **899.667sft** Geoid**12B**

**Iowa South Zone (1402)** Northing: **565757.611sft** Easting: **1538804.467sft**  
Mapping Angle: **-0°14'40"** Combination Scale Factor: **0.99992421**

**IaRCS Zone 8** Northing: **7474517.418sft** Easting: **18457688.043sft**  
Mapping Angle: **-0°06'09"** Combination Scale Factor: **0.99999212**

**Monument Type:** Berntsen Top Security Rod monument (3/4"dia x 9ft.+) with 2-1/2" aluminum survey cap and permanent magnet encased in a 5" dia. PVC pipe with NGS style alum. access cover.



*This document was prepared by Dan Corbin, Inc. on March 9, 2018 for Dallas County, Iowa.*