

Dallas County, Iowa

Horizontal Datum: **NAD 83(NA2011)** - Vertical Datum: **NAVD 1988**
Iowa State Plane South Zone (1402)
Iowa Regional Coordinate System, Zone 8, Ames-Des Moines TM
US Survey Feet
2018

Point Name: **37068**

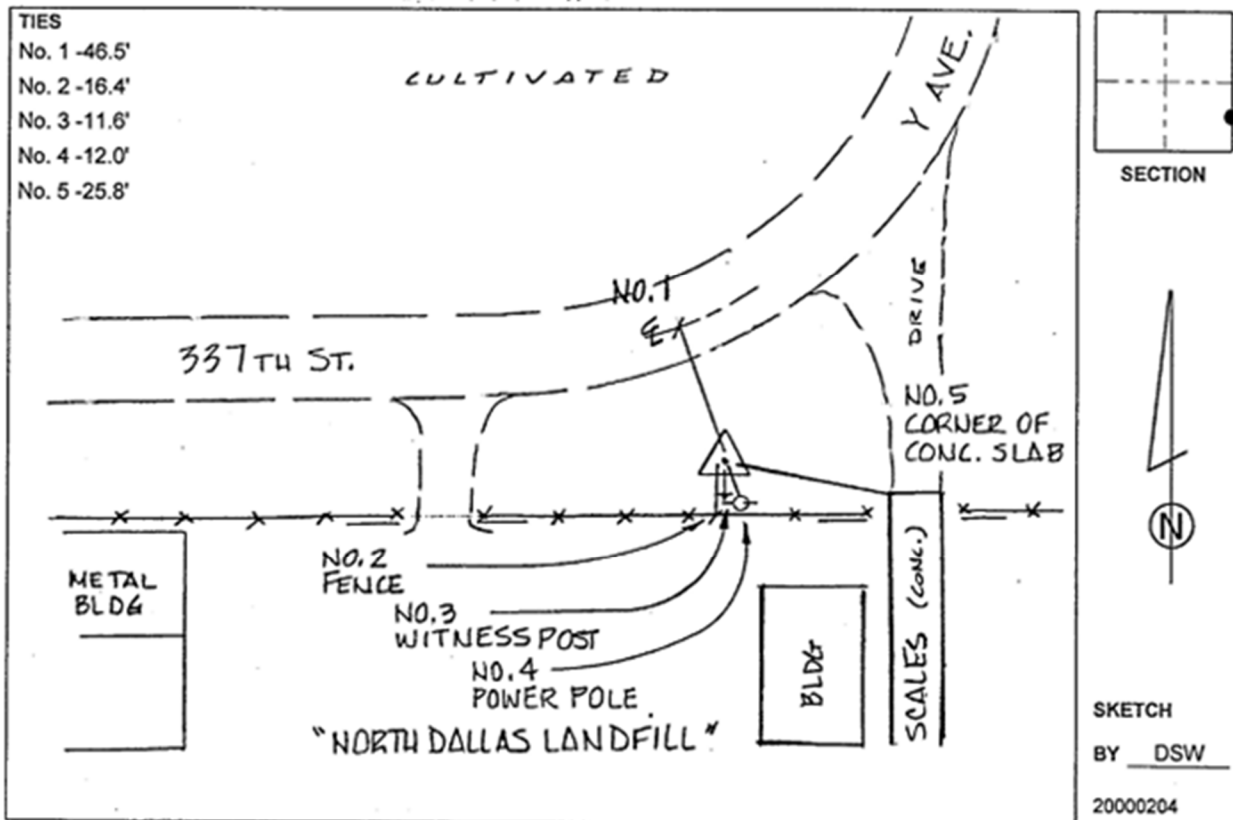
Designation: Greene Co. A068 (set by Deni Assoc. in 2000)

NAD 83(NA2011) Latitude: **N41°52'00.53258"** Longitude: **W94°09'52.57796"**
NAVD 88 Ortho Height: **992.430sft** Ellip. Ht: **899.982sft** Geoid**12B**

Iowa South Zone (1402) Northing: **680858.619sft** Easting: **1459386.714sft**
Mapping Angle: **-0°26'16"** Combination Scale Factor: **0.99997295**

IaRCS Zone 8 Northing: **7589429.186sft** Easting: **18377983.881sft**
Mapping Angle: **-0°17'56"** Combination Scale Factor: **1.00000707**

Monument Type: 3-1/4"dia alum. disk set in 10"dia poured-in-place concrete monument.



This document was prepared by Dan Corbin, Inc. on March 9, 2018 for Dallas County, Iowa.