

Dallas County, Iowa

Horizontal Datum: **NAD 83(NA2011)** - Vertical Datum: **NAVD 1988**
Iowa State Plane South Zone (1402)
Iowa Regional Coordinate System, Zone 8, Ames-Des Moines TM
US Survey Feet
2018

Point Name: **37070**

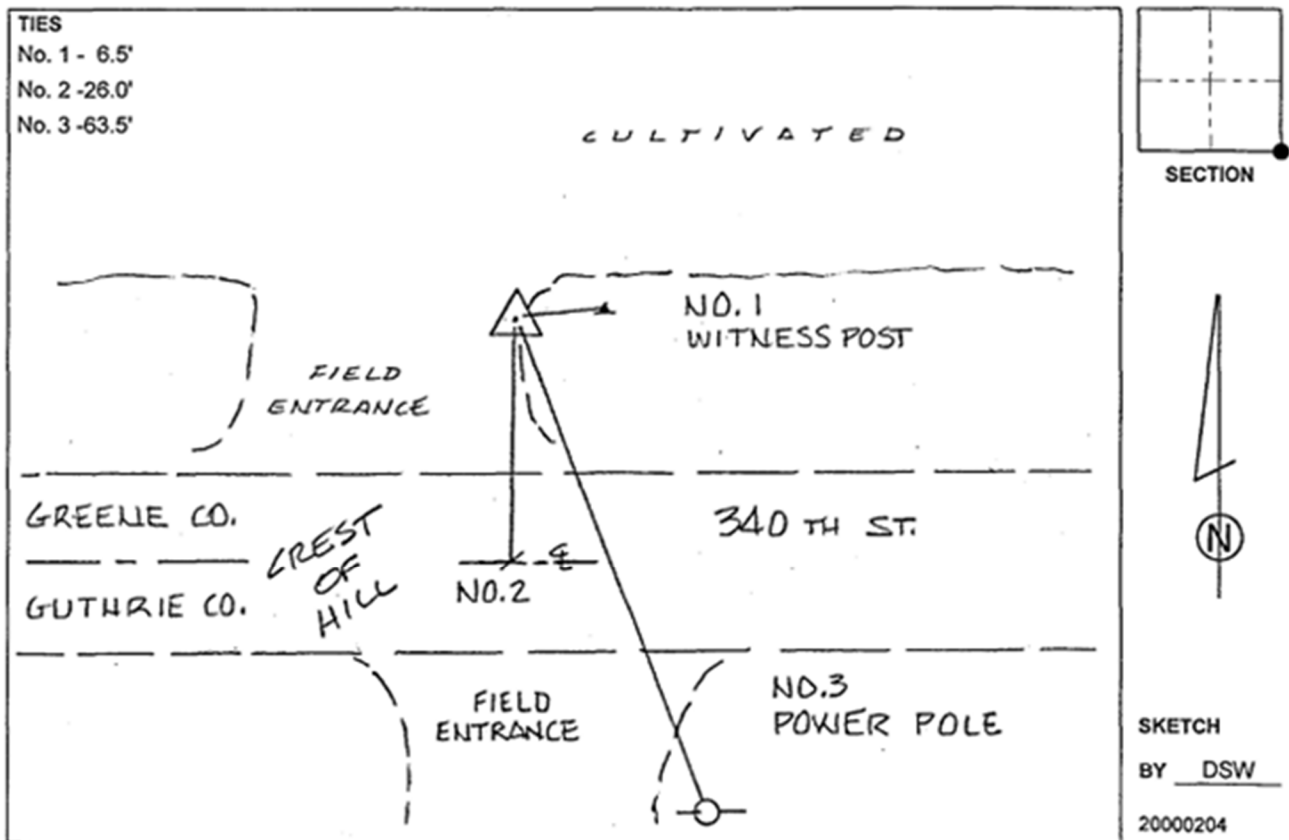
Designation: Greene Co. A070 (set by Deni Assoc. in 2000)

NAD 83(NA2011) Latitude: **N41°51'47.06817"** Longitude: **W94°16'54.69584"**
NAVD 88 Ortho Height: **1064.970sft** Ellip. Ht: **973.972sft** **Geoid12B**

Iowa South Zone (1402) Northing: **679761.298sft** Easting: **1427436.496sft**
Mapping Angle: **-0°30'54"** Combination Scale Factor: **0.99996866**

IaRCS Zone 8 Northing: **7588254.690sft** Easting: **18346035.148sft**
Mapping Angle: **-0°22'38"** Combination Scale Factor: **1.00001361**

Monument Type: 3-1/4"dia alum. disk set in 10"dia poured-in-place concrete monument.



This document was prepared by Dan Corbin, Inc. on March 9, 2018 for Dallas County, Iowa.