

Dallas County, Iowa

Horizontal Datum: **NAD 83(NA2011)** - Vertical Datum: **NAVD 1988**

Iowa State Plane South Zone (1402)

Iowa Regional Coordinate System, Zone 8, Ames-Des Moines TM

US Survey Feet

2018

Point Name: **8001**

Designation: Boone Co. 99-001 (set by Asi in 1999)

NAD 83(NA2011) Latitude: **N41°52'13.77230"** Longitude: **W94°09'51.94887"**

NAVD 88 Ortho Height: **1014.750sft** Ellip. Ht: **922.378sft** **Geoid12B**

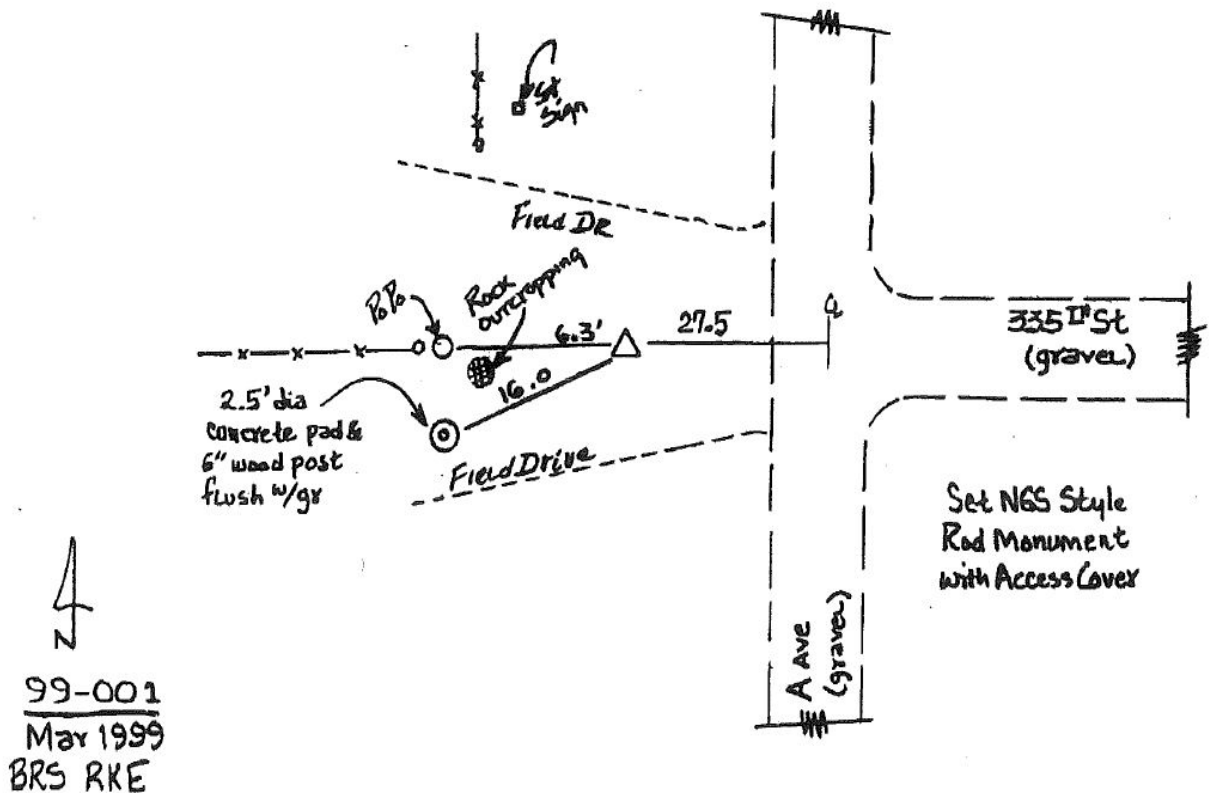
Iowa South Zone (1402) Northing: **682198.409sft** Easting: **1459444.549sft**

Mapping Angle: **-0°26'16"** Combination Scale Factor: **0.99997263**

IaRCS Zone 8 Northing: **7590769.157sft** Easting: **18378038.472sft**

Mapping Angle: **-0°17'56"** Combination Scale Factor: **1.00000598**

Monument Type: 5/8" dia driven aluminum rod with a 2-1/2" dia. cap and permanent magnet encased in a 5" dia PVC pipe with an access cover.



This document was prepared by Dan Corbin, Inc. on March 9, 2018 for Dallas County, Iowa.