

Dallas County, Iowa
 Horizontal Datum: **NAD 83(NA2011)** - Vertical Datum: **NAVD 1988**
 Iowa State Plane South Zone (1402)
 Iowa Regional Coordinate System, Zone 8, Ames-Des Moines TM
 US Survey Feet
2018

Point Name: **8002**

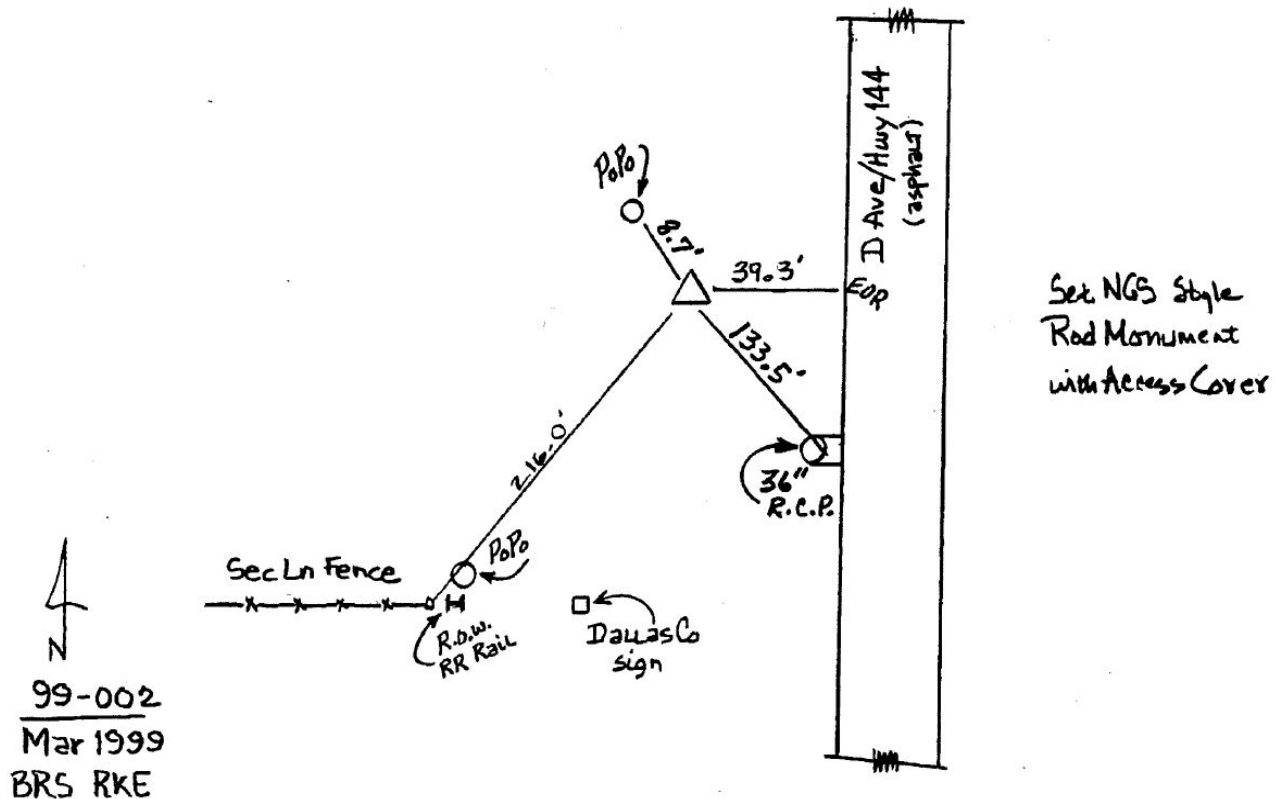
Designation: Boone Co. 99-002 (set by Asi in 1999)

NAD 83(NA2011) Latitude: **N41°51'49.49786"** Longitude: **W94°06'22.69654"**
 NAVD 88 Ortho Height: **995.650sft** Ellip. Ht: **902.242sft** Geoid**12B**

Iowa South Zone (1402) Northing: **679625.643sft** Easting: **1475258.946sft**
 Mapping Angle: **-0°23'58"** Combination Scale Factor: **0.99997222**

IaRCS Zone 8 Northing: **7588234.704sft** Easting: **18393859.572sft**
 Mapping Angle: **-0°15'36"** Combination Scale Factor: **1.00000282**

Monument Type: 5/8" dia driven aluminum rod with a 2-1/2" dia. cap and permanent magnet encased in a 5" dia PVC pipe with an access cover.



This document was prepared by Dan Corbin, Inc. on March 9, 2018 for Dallas County, Iowa.