

**Dallas County, Iowa**

Horizontal Datum: **NAD 83(NA2011)** - Vertical Datum: **NAVD 1988**  
Iowa State Plane South Zone (1402)  
Iowa Regional Coordinate System, Zone 8, Ames-Des Moines TM  
US Survey Feet  
**2018**

Point Name: **8004**

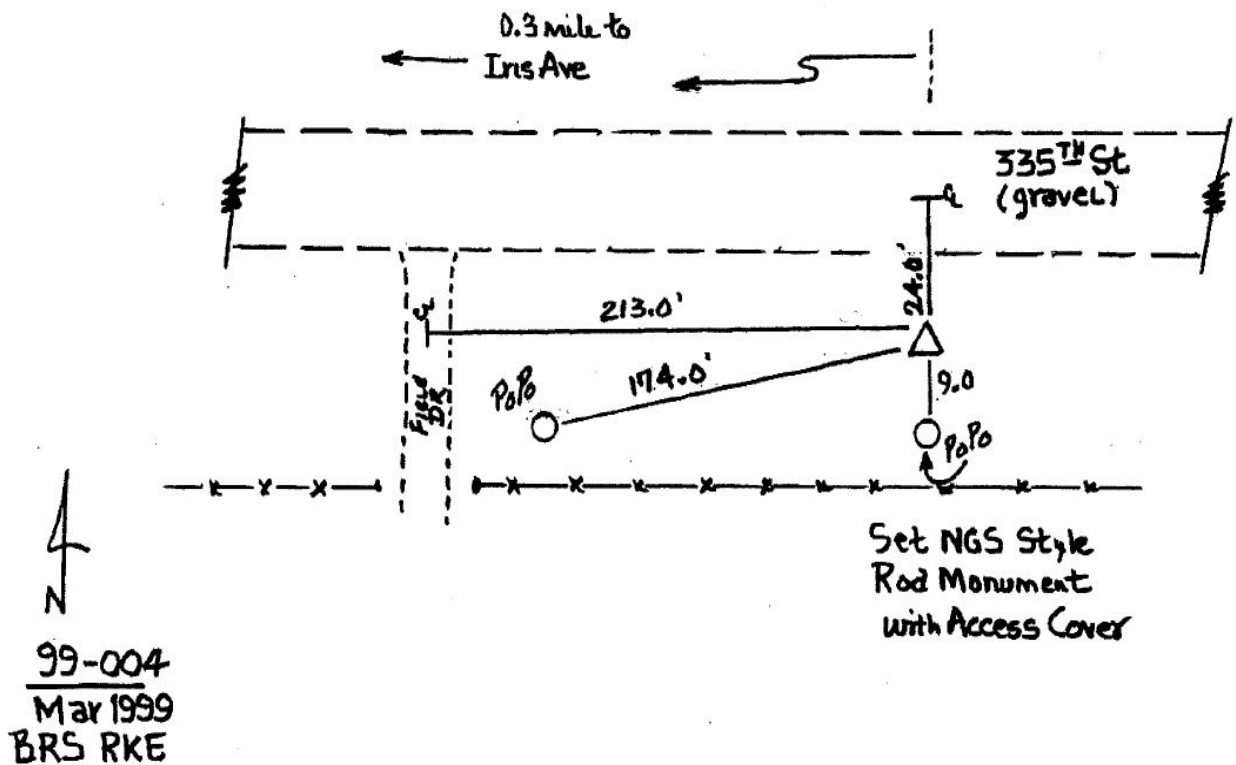
**Designation:** Boone Co. 99-004 (set by Asi in 1999)

NAD 83(NA2011) Latitude: **N41°52'13.02362"** Longitude: **W93°59'18.70263"**  
NAVD 88 Ortho Height: **966.440sft** Ellip. Ht: **871.326sft** Geoid12B

**Iowa South Zone (1402)** Northing: **681805.096sft** Easting: **1507354.215sft**  
Mapping Angle: **-0°19'18"** Combination Scale Factor: **0.99997502**

**IaRCS Zone 8** Northing: **7590492.543sft** Easting: **18425950.275sft**  
Mapping Angle: **-0°10'53"** Combination Scale Factor: **0.99999769**

**Monument Type:** 5/8" dia driven aluminum rod with a 2-1/2" dia. cap and permanent magnet encased in a 5" dia PVC pipe with an access cover.



*This document was prepared by Dan Corbin, Inc. on March 9, 2018 for Dallas County, Iowa.*