

**Dallas County, Iowa**

Horizontal Datum: **NAD 83(NA2011)** - Vertical Datum: **NAVD 1988**  
Iowa State Plane South Zone (1402)  
Iowa Regional Coordinate System, Zone 8, Ames-Des Moines TM  
US Survey Feet  
**2018**

Point Name: **8005**

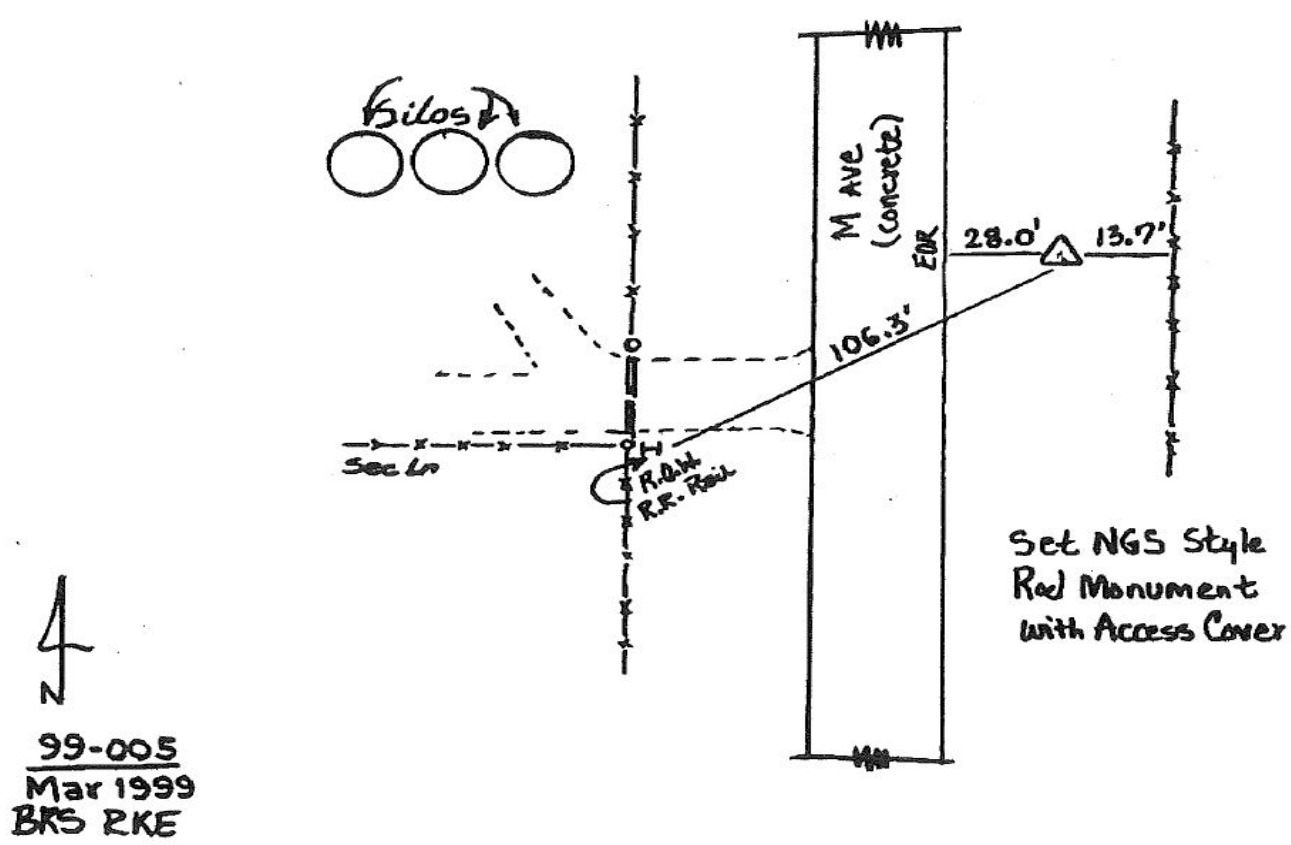
**Designation:** Boone Co. 99-005 (set by Asi in 1999)

NAD 83(NA2011) Latitude: **N41°51'48.05777"** Longitude: **W93°55'51.48617"**  
NAVD 88 Ortho Height: **1063.370sft** Ellip. Ht: **967.159sft** **Geoid12B**

**Iowa South Zone (1402)** Northing: **679195.092sft** Easting: **1523019.438sft**  
Mapping Angle: **-0°17'02"** Combination Scale Factor: **0.99996904**

**IaRCS Zone 8** Northing: **7587920.932sft** Easting: **18441622.203sft**  
Mapping Angle: **-0°08'35"** Combination Scale Factor: **0.99999075**

**Monument Type:** 5/8" dia driven aluminum rod with a 2-1/2" dia. cap and permanent magnet encased in a 5" dia PVC pipe with an access cover.



*This document was prepared by Dan Corbin, Inc. on March 9, 2018 for Dallas County, Iowa.*