

Dallas County, Iowa
 Horizontal Datum: **NAD 83(NA2011)** - Vertical Datum: **NAVD 1988**
 Iowa State Plane South Zone (1402)
 Iowa Regional Coordinate System, Zone 8, Ames-Des Moines TM
 US Survey Feet
2018

Point Name: **8007**

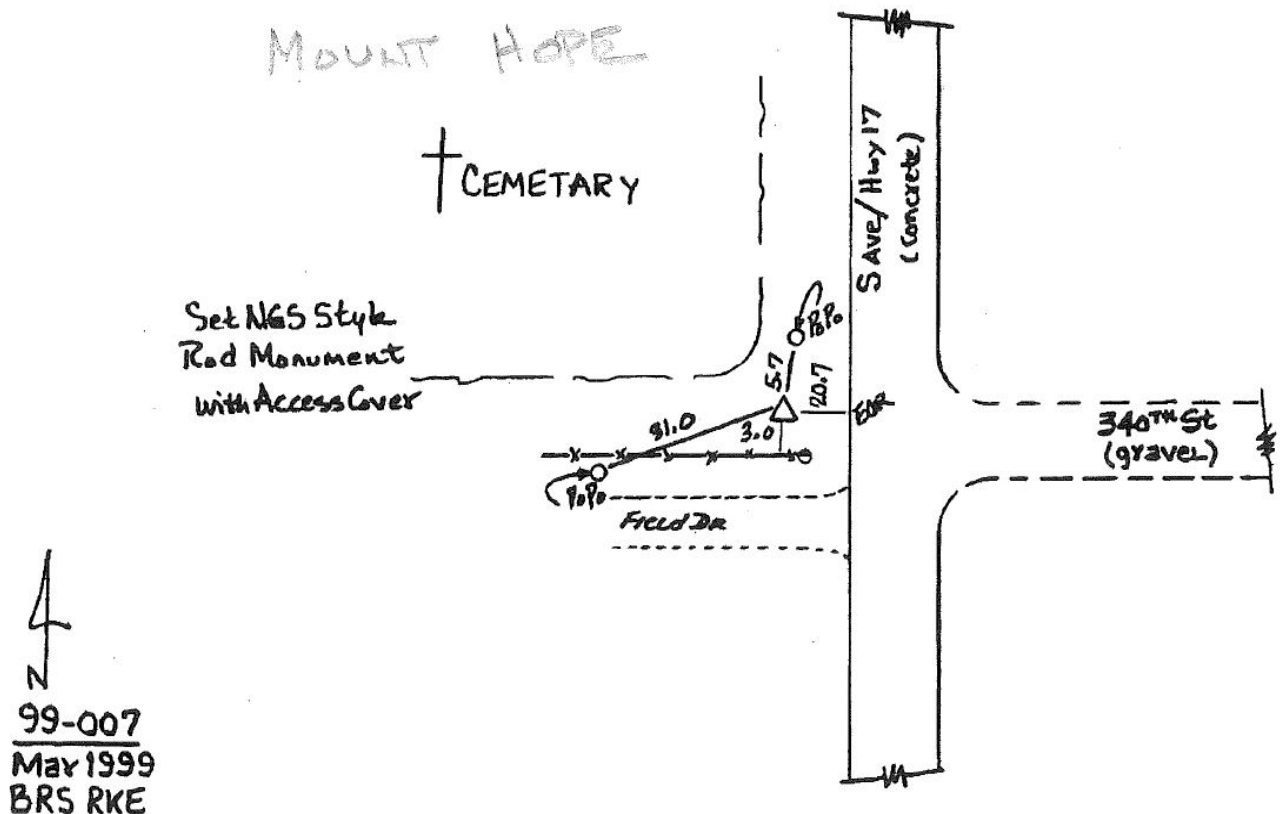
Designation: Boone Co. 99-007 (set by Asi in 1999)

NAD 83(NA2011) Latitude: **N41°51'48.38314"** Longitude: **W93°48'57.01870"**
 NAVD 88 Ortho Height: **1032.720sft** Ellip. Ht: **934.748sft** Geoid12B

Iowa South Zone (1402) Northing: **679093.396sft** Easting: **1554381.152sft**
 Mapping Angle: **-0°12'29"** Combination Scale Factor: **0.99997061**

IaRCS Zone 8 Northing: **7587896.612sft** Easting: **18472984.698sft**
 Mapping Angle: **-0°03'58"** Combination Scale Factor: **0.99998923**

Monument Type: 5/8" dia driven aluminum rod with a 2-1/2" dia. cap and permanent magnet encased in a 5" dia PVC pipe with an access cover.



This document was prepared by Dan Corbin, Inc. on March 9, 2018 for Dallas County, Iowa.