

2000  
Davis & Van Buren Counties, Iowa  
Iowa South Zone (1402)  
NAD\_83(1996)

Point Number: 104

Northing: 283913.40(Ft)      Easting: 1879054.67(Ft)

Northing: 86536.977(M)      Easting: 572737.007(M)

Elev: 896.38(Ft) NAVD\_88

Elev: 273.216(M) NAVD\_88      Ellip Ht: 240.805(M)      96C Geoid Ht: -32.411(M)

Latitude: 40-46-33.704905 N      Longitude: 92-38-18.058353 W

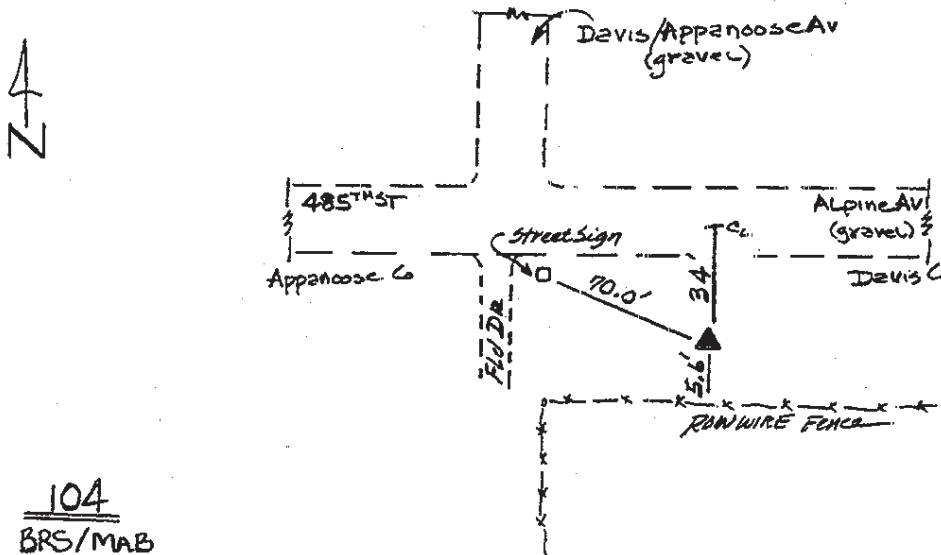
Theta: 0-34-03.25      Combination Factor: 0.99993791

Designation: DAVIS CO GPS CONTROL PT 2000-104

**Monument Type:** 5/8" dia driven aluminum rod with a 2-1/2" dia aluminum cap and permanent magnet encased in a 5" dia PVC pipe with an aluminum access cover.

**To Reach:** 35ft S of Alpine Ave, 70ft E of Davis Appanoose Ave near the W 1/4 cor Sec 18 T69N R15W.

Date Printed July 25, 2000



104  
BRS/MAB  
APRIL 2000