

2000  
Davis & Van Buren Counties, Iowa  
Iowa South Zone (1402)  
NAD\_83(1996)

Point Number: 109

Northing: 234260.08(Ft)      Easting: 1911309.49(Ft)

Northing: 71402.614(M)      Easting: 582568.299(M)

Elev: 890.69(Ft) NAVD\_88

Elev: 271.483(M) NAVD\_88      Ellip Ht: 238.886(M)      96C Geoid Ht: -32.597(M)

Latitude: 40-38-19.727307 N      Longitude: 92-31-26.068732 W

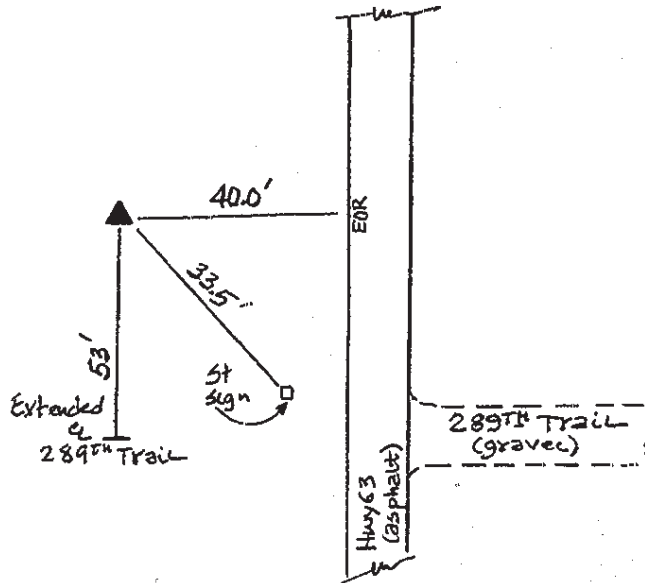
Theta: 0-38-34.63      Combination Factor: 0.99995868

Designation: DAVIS CO GPS CONTROL PT 2000-109

**Monument Type:** 5/8" dia driven aluminum rod with a 2-1/2" dia aluminum cap and permanent magnet encased in a 5" dia PVC pipe with an aluminum access cover.

**To Reach:** 40ft W of US Hwy 63, 50ft N of 289th St. near the SE cor Sec 36 T68N R15W.

Date Printed July 25, 2000



109  
BRS/MAB  
APRIL 2000