

2000  
Davis & Van Buren Counties, Iowa  
Iowa South Zone (1402)  
NAD\_83(1996)

Point Number: 110

Northing: 265900.08(Ft)      Easting: 1909722.08(Ft)

Northing: 81046.506(M)      Easting: 582084.454(M)

Elev: 916.46(Ft) NAVD\_88

Elev: 279.339(M) NAVD\_88      Ellip Ht: 246.760(M)      96C Geoid Ht: -32.579(M)

Latitude: 40-43-32.527034 N      Longitude: 92-31-42.073992 W

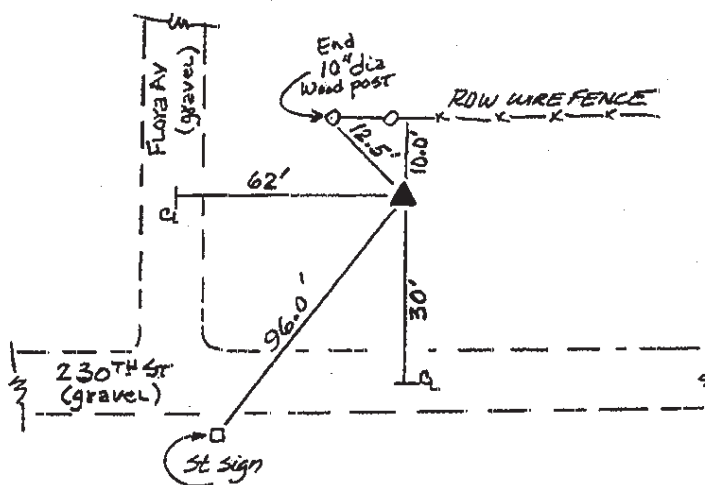
Theta: 0-38-24.09      Combination Factor: 0.99994382

Designation: **DAVIS CO GPS CONTROL PT 2000-110**

**Monument Type:** 5/8" dia driven aluminum rod with a 2-1/2" dia aluminum cap and permanent magnet encased in a 5" dia PVC pipe with an aluminum access cover.

**To Reach:** 30ft N of 230th St, 60ft E of Flora Ave. in the SE 1/4 Sec 36 T69N R15W.

Date Printed July 25, 2000



110  
BRS/RKE  
APRIL 2000