

2000  
Davis & Van Buren Counties, Iowa  
Iowa South Zone (1402)  
NAD\_83(1996)

Point Number: 114

Northing: 234438.87(Ft)      Easting: 1943265.40(Ft)

Northing: 71457.110(M)      Easting: 592308.478(M)

Elev: 873.01(Ft) NAVD\_88

Elev: 266.094(M) NAVD\_88      Ellip Ht: 233.357(M)      96C Geoid Ht: -32.737(M)

Latitude: 40-38-17.741566 N      Longitude: 92-24-31.559522 W

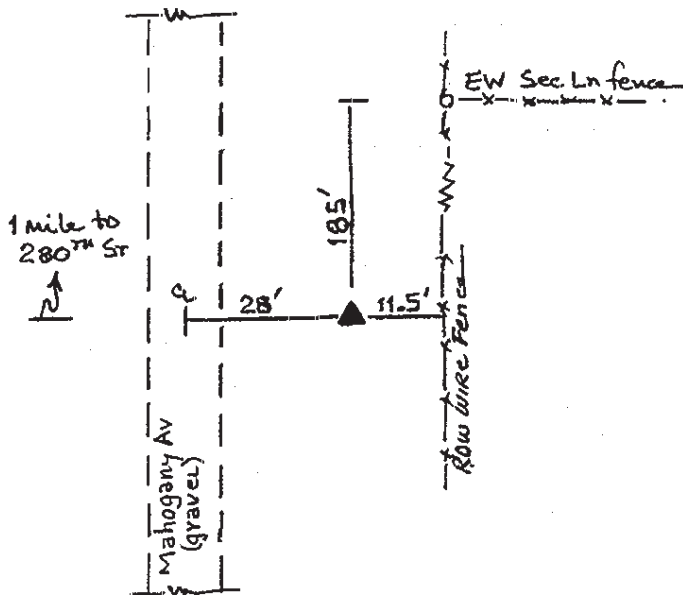
Theta: 0-43-07.67      Combination Factor: 0.99995964

Designation: DAVIS CO GPS CONTROL PT 2000-114

**Monument Type:** 5/8" dia driven aluminum rod with a 2-1/2" dia aluminum cap and permanent magnet encased in a 5" dia PVC pipe with an aluminum access cover.

**To Reach:** 25ft E of Mahogany Ave., 185ft S of E/W section line fence near the NW cor Sec 6 T67N R13W.

Date Printed July 25, 2000



114  
BRS/MA13  
April 2000