

2000
Davis & Van Buren Counties, Iowa
Iowa South Zone (1402)
NAD_83(1996)

Point Number: 116

Northing: 298202.76(Ft) Easting: 1942308.89(Ft)

Northing: 90892.382(M) Easting: 592016.933(M)

Elev: 849.86(Ft) NAVD_88

Elev: 259.036(M) NAVD_88 Ellip Ht: 226.310(M) 96C Geoid Ht: -32.727(M)

Latitude: 40-48-47.878536 N Longitude: 92-24-33.595097 W

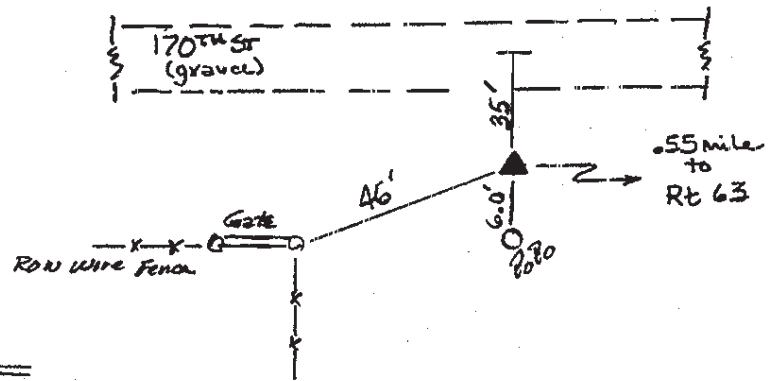
Theta: 0-43-06.33 Combination Factor: 0.99993560

Designation: DAVIS CO GPS CONTROL PT 2000-116

Monument Type: 5/8" dia driven aluminum rod with a 2-1/2" dia aluminum cap and permanent magnet encased in a 5" dia PVC pipe with an aluminum access cover.

To Reach: 35ft S of 170th St, 45ft E of N/S section line fence near the NW cor Sec 6 T69N R13W.

Date Printed July 25, 2000



116
BRS/MAB
April 2000