

2000
Davis & Van Buren Counties, Iowa
Iowa South Zone (1402)
NAD_83(1996)

Point Number: 121

Northing: 298733.84(Ft) Easting: 1974076.82(Ft)

Northing: 91054.258(M) Easting: 601699.817(M)

Elev: 811.40(Ft) NAVD_88

Elev: 247.318(M) NAVD_88 Ellip Ht: 214.485(M) 96C Geoid Ht: -32.832(M)

Latitude: 40-48-48.982866 N Longitude: 92-17-40.376650 W

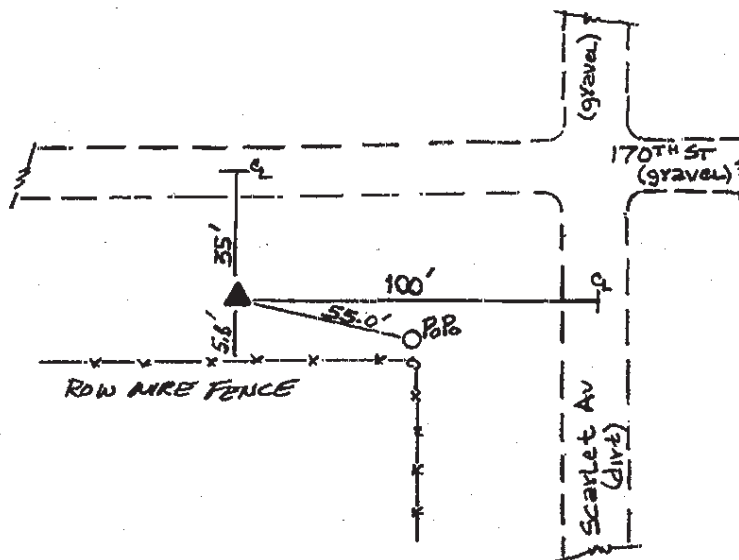
Theta: 0-47-38.51 Combination Factor: 0.99993742

Designation: DAVIS CO GPS CONTROL PT 2000-121

Monument Type: 5/8" dia driven aluminum rod with a 2-1/2" dia aluminum cap and permanent magnet encased in a 5" dia PVC pipe with an aluminum access cover.

To Reach: 35ft S of 170th St, 100ft W of Scarlet Ave near the NE cor Sec 1 T69N R13W.

Date Printed July 25, 2000



121
BR5/MAB
APRIL 2000