

2000
Davis & Van Buren Counties, Iowa
Iowa South Zone (1402)
NAD_83(1996)

Point Number: 125

Northing: 251453.25(Ft) Easting: 2004369.59(Ft)

Northing: 76643.102(M) Easting: 610933.073(M)

Elev: 777.28(Ft) NAVD_88

Elev: 236.919(M) NAVD_88 Ellip Ht: 203.989(M) 96C Geoid Ht: -32.930(M)

Latitude: 40-40-57.507796 N Longitude: 92-11-15.719395 W

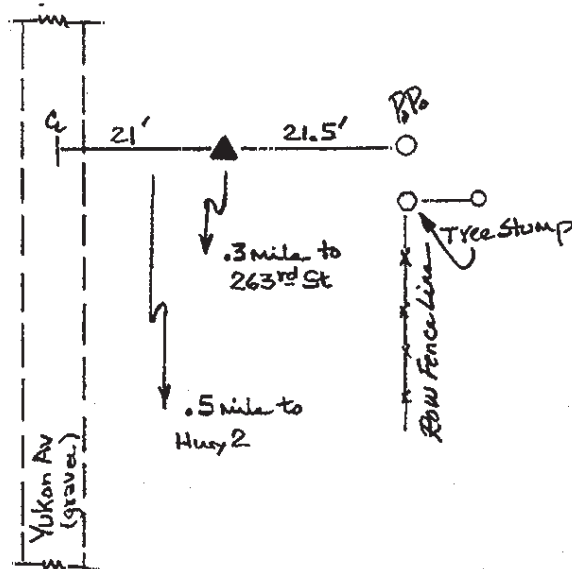
Theta: 0-51-51.89 Combination Factor: 0.99995700

Designation: **DAVIS CO GPS CONTROL PT 2000-125**

Monument Type: 5/8" dia driven aluminum rod with a 2-1/2" dia aluminum cap and permanent magnet encased in a 5" dia PVC pipe with an aluminum access cover.

To Reach: 20ft E of Yukon Ave, on line with E/W section line near the S quarter cor Sec 13 T68N R12W.

Date Printed July 25, 2000



125
BRS/MAB
APRIL 2000