

2000
Davis & Van Buren Counties, Iowa
Iowa South Zone (1402)
NAD_83(1996)

Point Number: 127

Northing: 286033.84(Ft) Easting: 2005869.02(Ft)

Northing: 87183.287(M) Easting: 611390.102(M)

Elev: 778.89(Ft) NAVD_88

Elev: 237.411(M) NAVD_88 Ellip Ht: 204.497(M) 96C Geoid Ht: -32.914(M)

Latitude: 40-46-38.944631 N Longitude: 92-10-49.449813 W

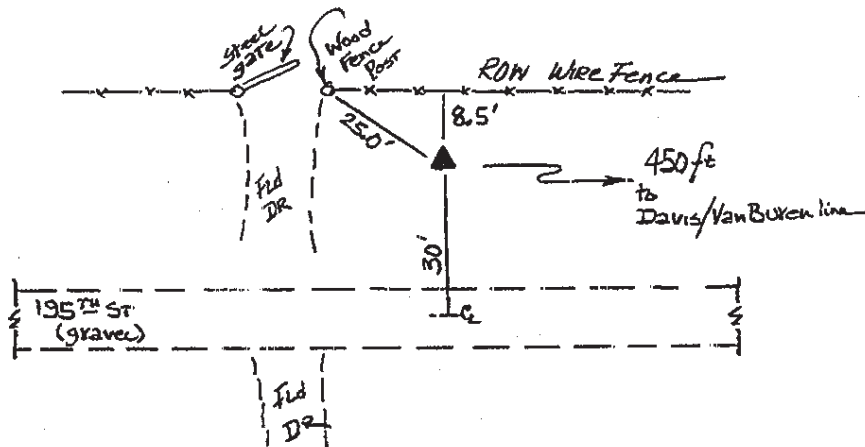
Theta: 0-52-09.19 Combination Factor: 0.99994342

Designation: DAVIS CO GPS CONTROL PT 2000-127

Monument Type: 5/8" dia driven aluminum rod with a 2-1/2" dia aluminum cap and permanent magnet encased in a 5" dia PVC pipe with an aluminum access cover.

To Reach: 30ft N of 195th St. 450ft W of Davis Van Buren Co. line section fence to N near the E quarter cor Sec13 T69N R12W.

Date Printed July 25, 2000



127
BRS/MAB
APRIL 2000