

2000  
Davis & Van Buren Counties, Iowa  
Iowa South Zone (1402)  
NAD\_83(1996)

Point Number: 129

Northing: 313820.38(Ft)      Easting: 2005683.46(Ft)

Northing: 95652.642(M)      Easting: 611333.541(M)

Elev: 751.67(Ft) NAVD\_88

Elev: 229.111(M) NAVD\_88      Ellip Ht: 196.227(M)      96C Geoid Ht: -32.884(M)

Latitude: 40-51-13.506054 N      Longitude: 92-10-46.378830 W

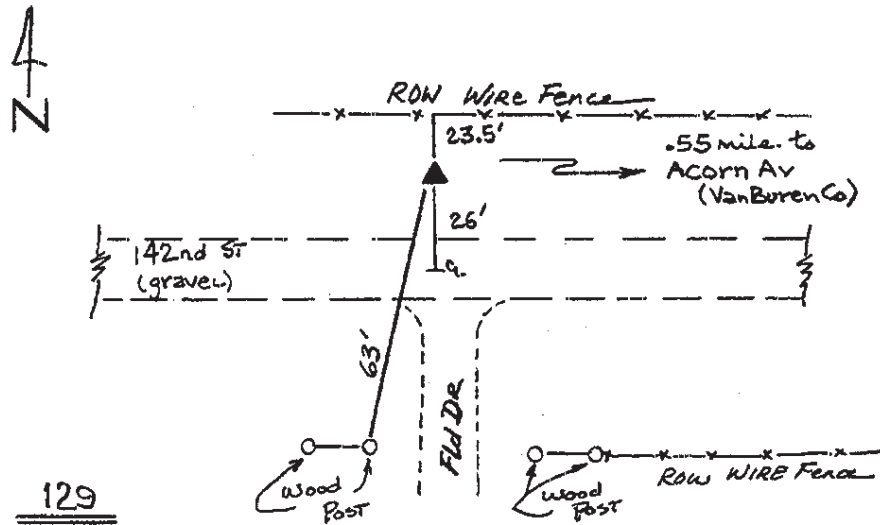
Theta: 0-52-11.22      Combination Factor: 0.99993583

Designation: DAVIS CO GPS CONTROL PT 2000-129

**Monument Type:** 5/8" dia driven aluminum rod with a 2-1/2" dia aluminum cap and permanent magnet encased in a 5" dia PVC pipe with an aluminum access cover.

**To Reach:** 25ft N of 142nd St, on line with W edge of field entr. to S in the NE quarter Sec 24 T70N R12W.

Date Printed July 25, 2000



129  
BRS/MAB  
APRIL 2000