

2000
Davis & Van Buren Counties, Iowa
Iowa South Zone (1402)
NAD_83(1996)

Point Number: 133

Northing: 235284.27(Ft) Easting: 2038981.89(Ft)

Northing: 71714.788(M) Easting: 621482.923(M)

Elev: 773.32(Ft) NAVD_88

Elev: 235.715(M) NAVD_88 Ellip Ht: 202.715(M) 96C Geoid Ht: -33.000(M)

Latitude: 40-38-12.354342 N Longitude: 92-03-49.978477 W

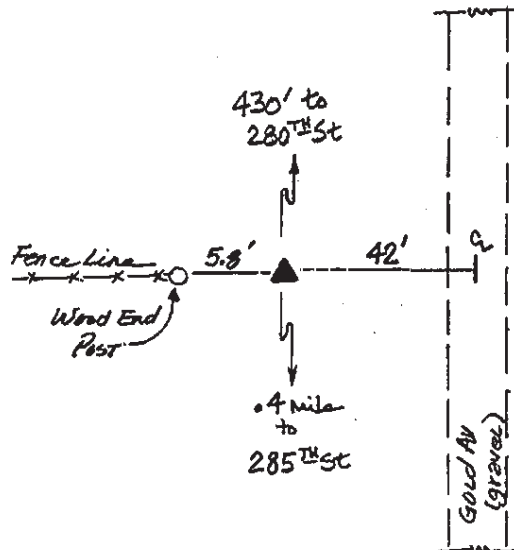
Theta: 0-56-45.50 Combination Factor: 0.99996470

Designation: VAN BUREN CO GPS CONTROL PT 2000-133

Monument Type: 5/8" dia driven aluminum rod with a 2-1/2" dia aluminum cap and permanent magnet encased in a 5" dia PVC pipe with an aluminum access cover.

To Reach: 40ft W of Gold Ave, approx. 430ft S of 280th St and on line with fence to W in the NE cor Sec 1 T67N R11W.

Date Printed July 25, 2000



133
BRS/MAB
APRIL 2000