

2000  
Davis & Van Buren Counties, Iowa  
Iowa South Zone (1402)  
NAD\_83(1996)

Point Number: 135

Northing: 299536.85(Ft)      Easting: 2037848.72(Ft)

Northing: 91299.015(M)      Easting: 621137.531(M)

Elev: 626.24(Ft) NAVD\_88

Elev: 190.884(M) NAVD\_88      Ellip Ht: 157.915(M)      96C Geoid Ht: -32.969(M)

Latitude: 40-48-47.349597 N      Longitude: 92-03-50.917966 W

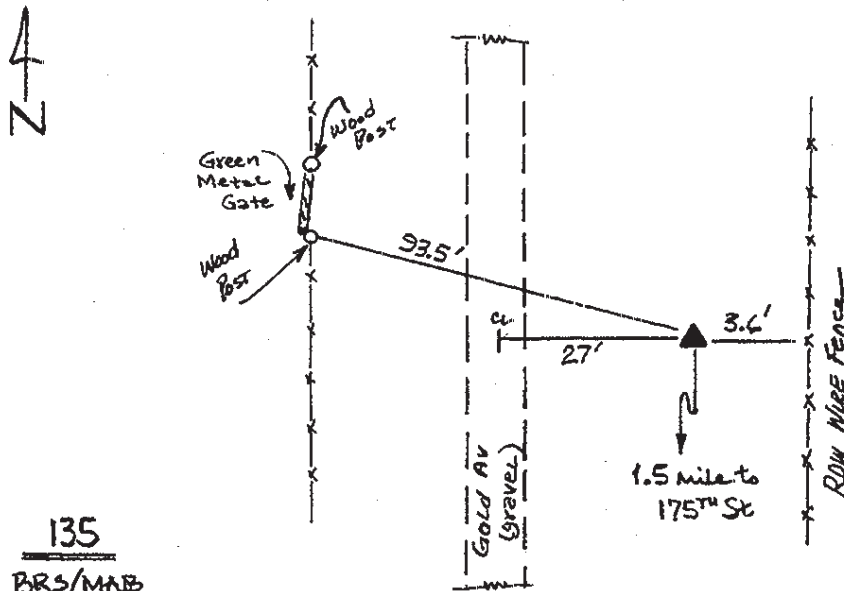
Theta: 0-56-44.88      Combination Factor: 0.99994635

Designation: VAN BUREN CO GPS CONTROL PT 2000-135

**Monument Type:** 5/8" dia driven aluminum rod with a 2-1/2" dia aluminum cap and permanent magnet encased in a 5" dia PVC pipe with an aluminum access cover.

**To Reach:** 95ft N of W section line fence, 25ft E of Gold Ave near the SW cor Sec 31 T70N R10W.

Date Printed July 25, 2000



135  
BRS/MAB  
APRIL 2000