

2000
Davis & Van Buren Counties, Iowa
Iowa South Zone (1402)
NAD_83(1996)

Point Number: 137

Northing: 223811.55(Ft) Easting: 2055343.41(Ft)

Northing: 68217.896(M) Easting: 626469.923(M)

Elev: 769.41(Ft) NAVD_88

Elev: 234.530(M) NAVD_88 Ellip Ht: 201.502(M) 96C Geoid Ht: -33.029(M)

Latitude: 40-36-16.281921 N Longitude: 92-00-20.341131 W

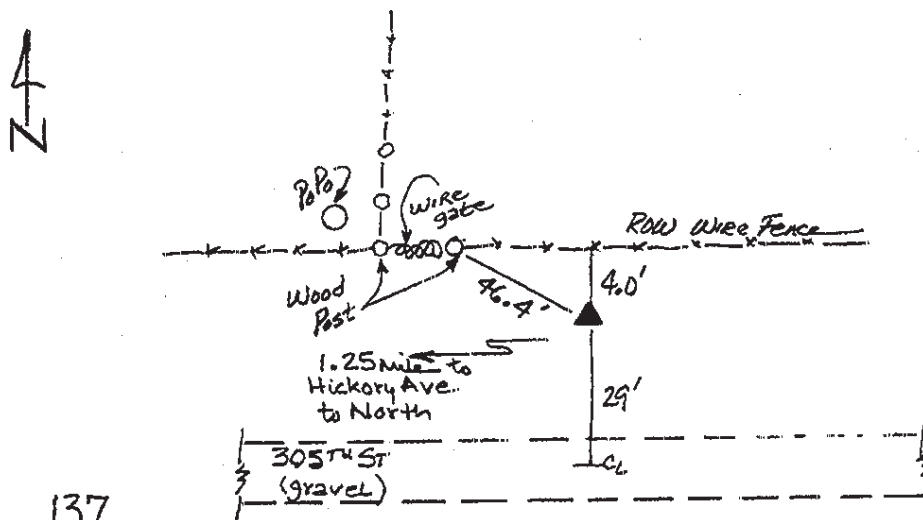
Theta: 0-59-03.59 Combination Factor: 0.99997055

Designation: VAN BUREN CO GPS CONTROL PT 2000-137

Monument Type: 5/8" dia driven aluminum rod with a 2-1/2" dia aluminum cap and permanent magnet encased in a 5" dia PVC pipe with an aluminum access cover.

To Reach: 30ft N of 305th St near the section line to the N near the W 1/4 cor Sec 15 T57N R10W.

Date Printed July 25, 2000



137
BRS/MAB
APRIL 2000