

2000
Davis & Van Buren Counties, Iowa
Iowa South Zone (1402)
NAD_83(1996)

Point Number: 138

Northing: 331543.81(Ft) Easting: 2053226.84(Ft)

Northing: 101054.756(M) Easting: 625824.791(M)

Elev: 756.88(Ft) NAVD_88

Elev: 230.704(M) NAVD_88 Ellip Ht: 197.769(M) 96C Geoid Ht: -32.935(M)

Latitude: 40-54-01.013612 N Longitude: 92-00-23.799070 W

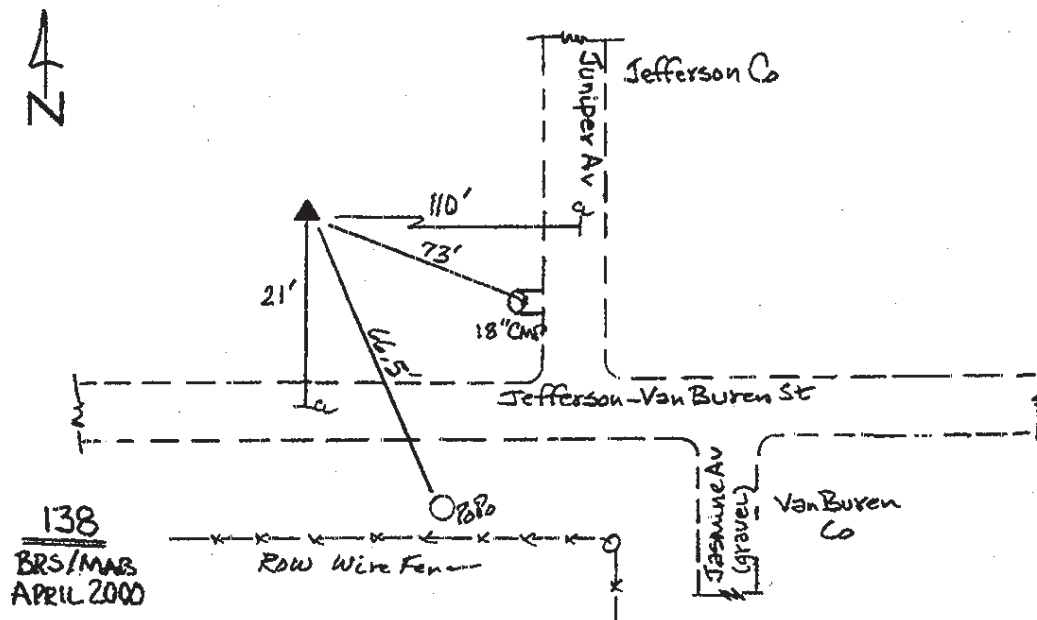
Theta: 0-59-01.31 Combination Factor: 0.99993102

Designation: VAN BUREN CO GPS CONTROL PT 2000-138

Monument Type: 5/8" dia driven aluminum rod with a 2-1/2" dia aluminum cap and permanent magnet encased in a 5" dia PVC pipe with an aluminum access cover.

To Reach: 110ft W of Juniper Ave, 20ft N of Jefferson Van Buren St near the SE cor Sec 33 T71N R10W.

Date Printed July 25, 2000



2000
Davis & Van Buren Counties, Iowa
Iowa South Zone (1402)
NAD_83(1996)

Point Number: 139

Northing: 224457.11(Ft) Easting: 2070129.62(Ft)

Northing: 68414.664(M) Easting: 630976.771(M)

Elev: 741.18(Ft) NAVD_88

Elev: 225.927(M) NAVD_88 Ellip Ht: 192.870(M) 96C Geoid Ht: -33.058(M)

Latitude: 40-36-20.105234 N Longitude: 91-57-08.523898 W

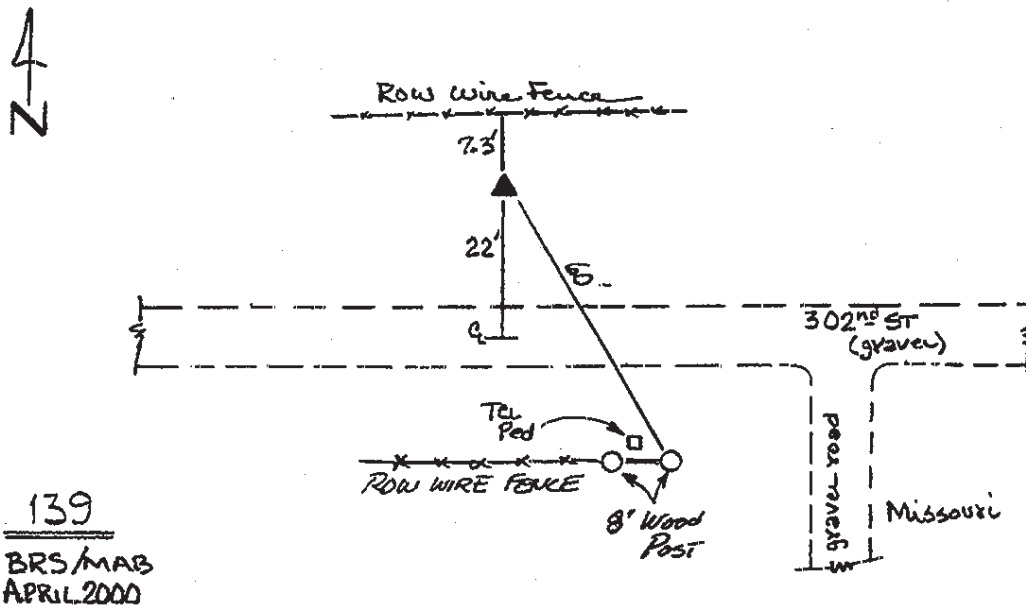
Theta: 1-01-09.94 Combination Factor: 0.99997171

Designation: VAN BUREN CO GPS CONTROL PT 2000-139

Monument Type: 5/8" dia driven aluminum rod with a 2-1/2" dia aluminum cap and permanent magnet encased in a 5" dia PVC pipe with an aluminum access cover.

To Reach: 20ft N of 302nd St, 75ft W of T-road to S in the NE quarter Sec 13 T67N R10W.

Date Printed July 25, 2000



2000
Davis & Van Buren Counties, Iowa
Iowa South Zone (1402)
NAD_83(1996)

Point Number: 140

Northing: 236213.29(Ft) Easting: 2069519.31(Ft)

Northing: 71997.954(M) Easting: 630790.747(M)

Elev: 744.44(Ft) NAVD_88

Elev: 226.918(M) NAVD_88 Ellip Ht: 193.853(M) 96C Geoid Ht: -33.065(M)

Latitude: 40-38-16.360260 N Longitude: 91-57-13.726123 W

Theta: 1-01-06.51 Combination Factor: 0.99996591

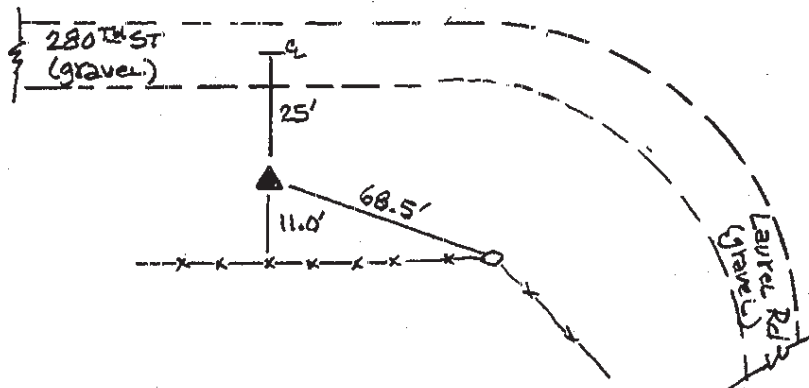
Designation: VAN BUREN CO GPS CONTROL PT 2000-140

Monument Type: 5/8" dia driven aluminum rod with a 2-1/2" dia aluminum cap and permanent magnet encased in a 5" dia PVC pipe with an aluminum access cover.

To Reach: 25ft S of 280th St, 115ft W of Laurel Rd near the N 1/4 cor Sec 1 T67N R10W.

Date Printed July 25, 2000

▲ Set NGS style
rod monument
N with access cover



140
BRS/MAB
APRIL 2000

2000
Davis & Van Buren Counties, Iowa
Iowa South Zone (1402)
NAD_83(1996)

Point Number: 141

Northing: 265249.89(Ft) Easting: 2069938.90(Ft)

Northing: 80848.326(M) Easting: 630918.638(M)

Elev: 719.38(Ft) NAVD_88

Elev: 219.282(M) NAVD_88 Ellip Ht: 186.205(M) 96C Geoid Ht: -33.077(M)

Latitude: 40-43-03.159805 N Longitude: 91-57-01.575093 W

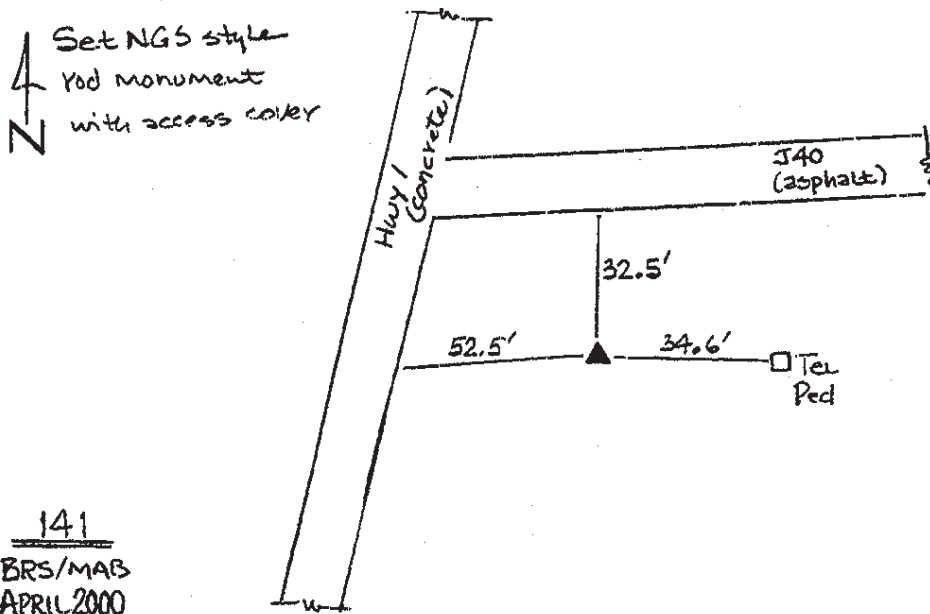
Theta: 1-01-14.51 Combination Factor: 0.99995451

Designation: VAN BUREN CO GPS CONTROL PT 2000-141

Monument Type: 5/8" dia driven aluminum rod with a 2-1/2" dia aluminum cap and permanent magnet encased in a 5" dia PVC pipe with an aluminum access cover.

To Reach: 30ft S of J 40, 50ft E of Iowa Hwy 1 near the E 1/4 cor Sec 1 T68N R10W.

Date Printed July 25, 2000



2000
Davis & Van Buren Counties, Iowa
Iowa South Zone (1402)
NAD_83(1996)

Point Number: 142

Northing: 298203.53(Ft) Easting: 2069730.92(Ft)

Northing: 90892.617(M) Easting: 630855.245(M)

Elev: 720.92(Ft) NAVD_88

Elev: 219.745(M) NAVD_88 Ellip Ht: 186.707(M) 96C Geoid Ht: -33.039(M)

Latitude: 40-48-28.768106 N Longitude: 91-56-56.645365 W

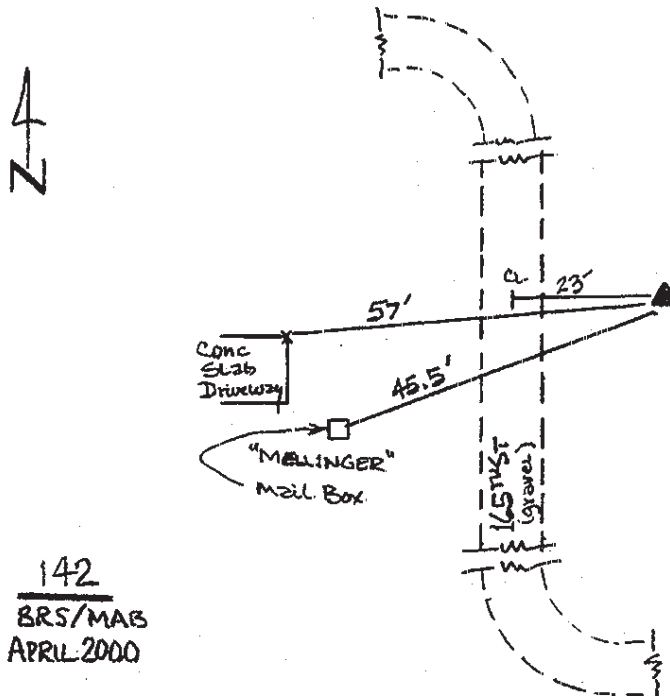
Theta: 1-01-17.76 Combination Factor: 0.99994245

Designation: VAN BUREN CO GPS CONTROL PT 2000-142

Monument Type: 5/8" dia driven aluminum rod with a 2-1/2" dia aluminum cap and permanent magnet encased in a 5" dia PVC pipe with an aluminum access cover.

To Reach: 20ft E of N/S bend in 165th St near the W 1/4 cor Sec 6 T69N R9W.

Date Printed July 25, 2000



142
BRS/MAB
APRIL 2000

2000
Davis & Van Buren Counties, Iowa
Iowa South Zone (1402)
NAD_83(1996)

Point Number: 143

Northing: 331973.77(Ft) Easting: 2069239.12(Ft)

Northing: 101185.808(M) Easting: 630705.345(M)

Elev: 755.92(Ft) NAVD_88

Elev: 230.410(M) NAVD_88 Ellip Ht: 197.443(M) 96C Geoid Ht: -32.967(M)

Latitude: 40-54-02.492458 N Longitude: 91-56-55.207865 W

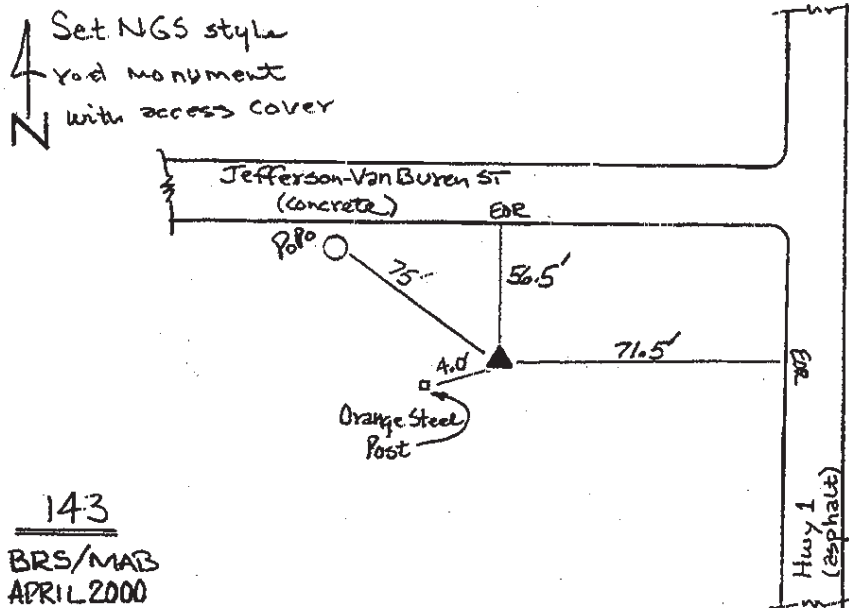
Theta: 1-01-18.71 Combination Factor: 0.99993104

Designation: VAN BUREN CO GPS CONTROL PT 2000-143

Monument Type: 5/8" dia driven aluminum rod with a 2-1/2" dia aluminum cap and permanent magnet encased in a 5" dia PVC pipe with an aluminum access cover.

To Reach: 55ft S of Jefferson Van Buren St, 70ft W of Iowa Hwy 1 near the NE cor Sec 1 T70N R10W

Date Printed July 25, 2000



2000
Davis & Van Buren Counties, Iowa
Iowa South Zone (1402)
NAD_83(1996)

Point Number: 144

Northing: 225577.42(Ft) Easting: 2089199.11(Ft)

Northing: 68756.135(M) Easting: 636789.163(M)

Elev: 731.68(Ft) NAVD_88

Elev: 223.034(M) NAVD_88 Ellip Ht: 189.942(M) 96C Geoid Ht: -33.093(M)

Latitude: 40-36-27.746611 N Longitude: 91-53-01.062783 W

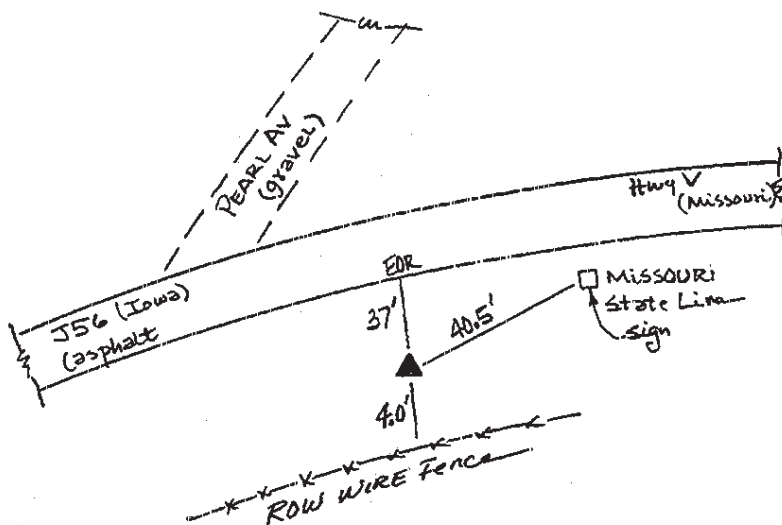
Theta: 1-03-52.94 Combination Factor: 0.99997179

Designation: VAN BUREN CO GPS CONTROL PT 2000-144

Monument Type: 5/8" dia driven aluminum rod with a 2-1/2" dia aluminum cap and permanent magnet encased in a 5" dia PVC pipe with an aluminum access cover.

To Reach: 35ft S of J 56, 40ft W of the Missouri St line near S 1/4 cor Sec 10 T67N R9W.

Date Printed July 25, 2000



144
BRS/MAB
APRIL 2000

2000
Davis & Van Buren Counties, Iowa
Iowa South Zone (1402)
NAD_83(1996)

Point Number: 146

Northing: 226681.08(Ft) Easting: 2103655.70(Ft)

Northing: 69092.529(M) Easting: 641195.540(M)

Elev: 724.20(Ft) NAVD_88

Elev: 220.755(M) NAVD_88 Ellip Ht: 187.642(M) 96C Geoid Ht: -33.113(M)

Latitude: 40-36-35.953017 N Longitude: 91-49-53.388716 W

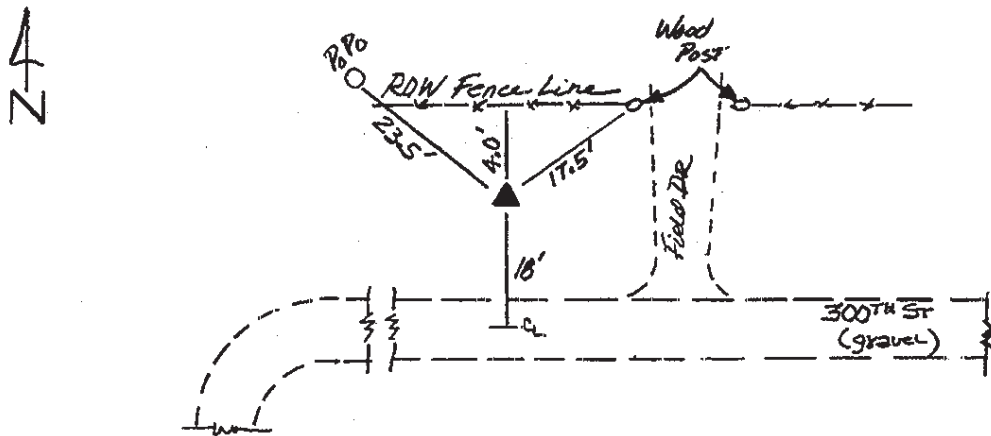
Theta: 1-05-56.56 Combination Factor: 0.99997174

Designation: VAN BUREN CO GPS CONTROL PT 2000-146

Monument Type: 5/8" dia driven aluminum rod with a 2-1/2" dia aluminum cap and permanent magnet encased in a 5" dia PVC pipe with an aluminum access cover.

To Reach: 20ft N of 300th St., 250ft E of a gravel road to S near the SW cor Sec 7 T67N R8W.

Date Printed July 25, 2000



146
BRS/MAS
APRIL 2000

2000
Davis & Van Buren Counties, Iowa
Iowa South Zone (1402)
NAD_83(1996)

Point Number: 147

Northing: 238019.14(Ft) Easting: 2104277.23(Ft)

Northing: 72548.378(M) Easting: 641384.984(M)

Elev: 589.36(Ft) NAVD_88

Elev: 179.657(M) NAVD_88 Ellip Ht: 146.535(M) 96C Geoid Ht: -33.122(M)

Latitude: 40-38-27.849091 N Longitude: 91-49-42.506738 W

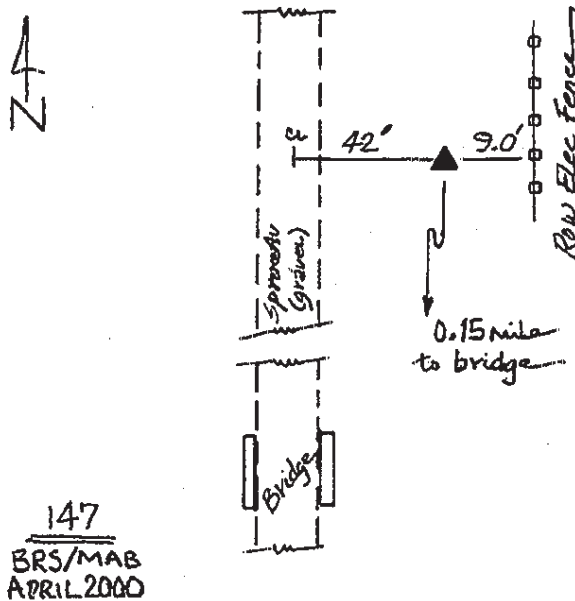
Theta: 1-06-03.73 Combination Factor: 0.99997279

Designation: VAN BUREN CO GPS CONTROL PT 2000-147

Monument Type: 5/8" dia driven aluminum rod with a 2-1/2" dia aluminum cap and permanent magnet encased in a 5" dia PVC pipe with an aluminum access cover.

To Reach: 0.15mi N of bridge, 40ft E of Spruce Ave near the S 1/4 cor Sec 31 T68N R8W.

Date Printed July 25, 2000



2000
Davis & Van Buren Counties, Iowa
Iowa South Zone (1402)
NAD_83(1996)

Point Number: 148

Northing: 267418.35(Ft) Easting: 2102292.98(Ft)

Northing: 81509.273(M) Easting: 640780.183(M)

Elev: 657.02(Ft) NAVD_88

Elev: 200.278(M) NAVD_88 Ellip Ht: 167.159(M) 96C Geoid Ht: -33.119(M)

Latitude: 40-43-18.673566 N Longitude: 91-50-00.935772 W

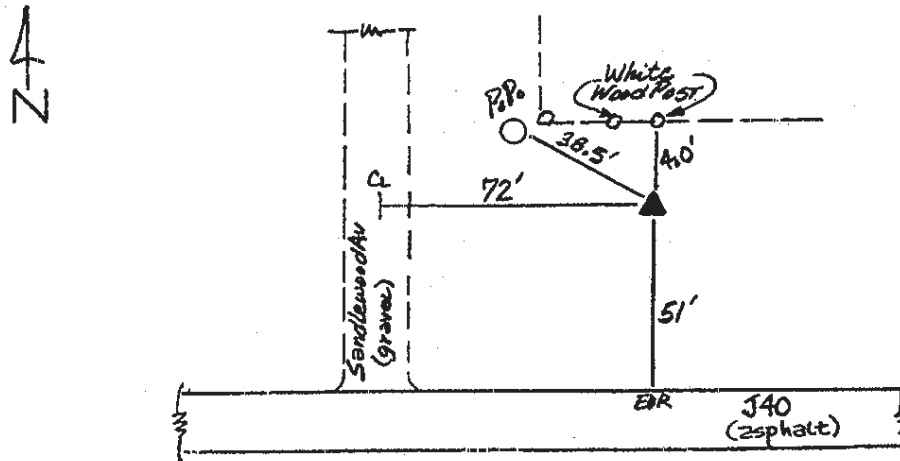
Theta: 1-05-51.59 Combination Factor: 0.99995687

Designation: VAN BUREN CO GPS CONTROL PT 2000-148

Monument Type: 5/8" dia driven aluminum rod with a 2-1/2" dia aluminum cap and permanent magnet encased in a 5" dia PVC pipe with an aluminum access cover.

To Reach: 50ft N of J 40, 70ft E of Sandalwood Ave. near the NW cor Sec 6 T68N R8W.

Date Printed July 25, 2000



148
BRS/MAB
APRIL 2000

2000
Davis & Van Buren Counties, Iowa
Iowa South Zone (1402)
NAD_83(1996)

Point Number: 149

Northing: 301060.48(Ft) Easting: 2101647.14(Ft)

Northing: 91763.419(M) Easting: 640583.331(M)

Elev: 738.79(Ft) NAVD_88

Elev: 225.194(M) NAVD_88 Ellip Ht: 192.121(M) 96C Geoid Ht: -33.073(M)

Latitude: 40-48-51.161374 N Longitude: 91-50-00.951997 W

Theta: 1-05-51.58 Combination Factor: 0.99994086

Designation: VAN BUREN CO GPS CONTROL PT 2000-149

Monument Type: 5/8" dia driven aluminum rod with a 2-1/2" dia aluminum cap and permanent magnet encased in a 5" dia PVC pipe with an aluminum access cover.

To Reach: 220ft N of Hwy 16, 50ft E of Spruce Ave, near the SW cor Sec 31 T70N R8W.

Date Printed July 25, 2000

