

2000  
Davis & Van Buren Counties, Iowa  
Iowa South Zone (1402)  
NAD\_83(1996)

Point Number: 140

Northing: 236213.29(Ft)      Easting: 2069519.31(Ft)

Northing: 71997.954(M)      Easting: 630790.747(M)

Elev: 744.44(Ft) NAVD\_88

Elev: 226.918(M) NAVD\_88      Ellip Ht: 193.853(M)      96C Geoid Ht: -33.065(M)

Latitude: 40-38-16.360260 N      Longitude: 91-57-13.726123 W

Theta: 1-01-06.51      Combination Factor: 0.99996591

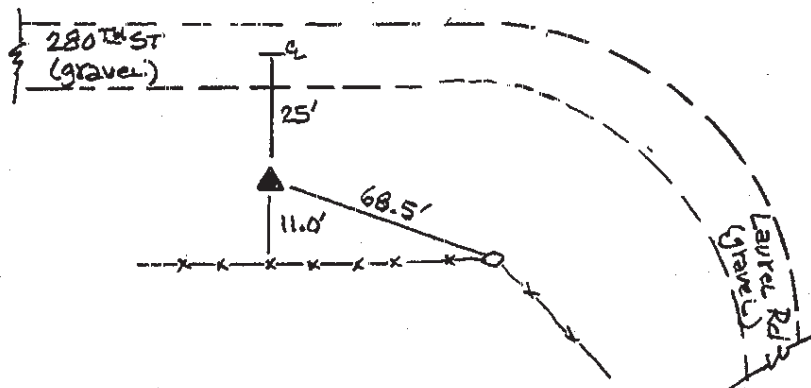
Designation: VAN BUREN CO GPS CONTROL PT 2000-140

**Monument Type:** 5/8" dia driven aluminum rod with a 2-1/2" dia aluminum cap and permanent magnet encased in a 5" dia PVC pipe with an aluminum access cover.

**To Reach:** 25ft S of 280th St, 115ft W of Laurel Rd near the N 1/4 cor Sec 1 T67N R10W.

Date Printed July 25, 2000

▲ Set NGS style  
rod monument  
N with access cover



140  
BRS/MAB  
APRIL 2000