

2000  
Davis & Van Buren Counties, Iowa  
Iowa South Zone (1402)  
NAD\_83(1996)

Point Number: 148

Northing: 267418.35(Ft)      Easting: 2102292.98(Ft)

Northing: 81509.273(M)      Easting: 640780.183(M)

Elev: 657.02(Ft) NAVD\_88

Elev: 200.278(M) NAVD\_88      Ellip Ht: 167.159(M)      96C Geoid Ht: -33.119(M)

Latitude: 40-43-18.673566 N      Longitude: 91-50-00.935772 W

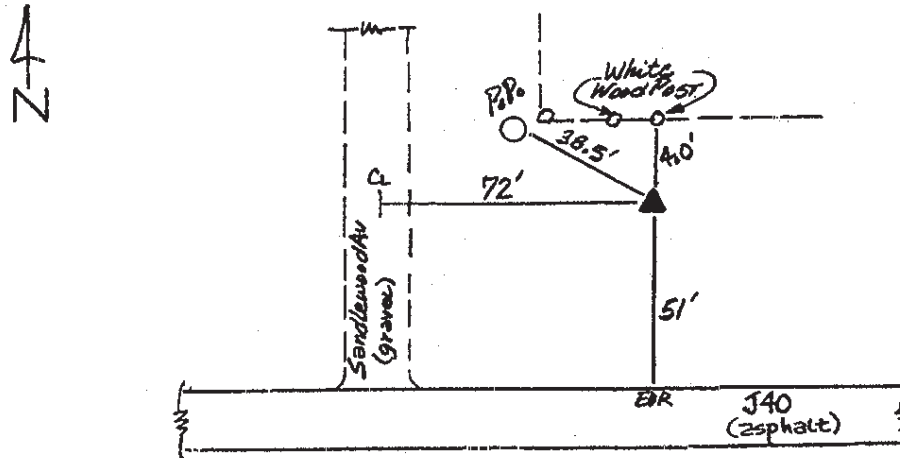
Theta: 1-05-51.59      Combination Factor: 0.99995687

Designation: VAN BUREN CO GPS CONTROL PT 2000-148

**Monument Type:** 5/8" dia driven aluminum rod with a 2-1/2" dia aluminum cap and permanent magnet encased in a 5" dia PVC pipe with an aluminum access cover.

**To Reach:** 50ft N of J 40, 70ft E of Sandalwood Ave. near the NW cor Sec 6 T68N R8W.

Date Printed July 25, 2000



148  
BRS/MAB  
APRIL 2000