

2001  
Delaware County, Iowa  
Iowa North Zone (1401)  
NAD\_83(1996)

Point Number: 138

Northing: 3590781.94(Ft)      Easting: 5519873.39(Ft)

Elev: 996.33(Ft) NAVD\_88

Ellip Ht: 892.26(Ft)      99C Geoid Ht: -104.08(Ft)

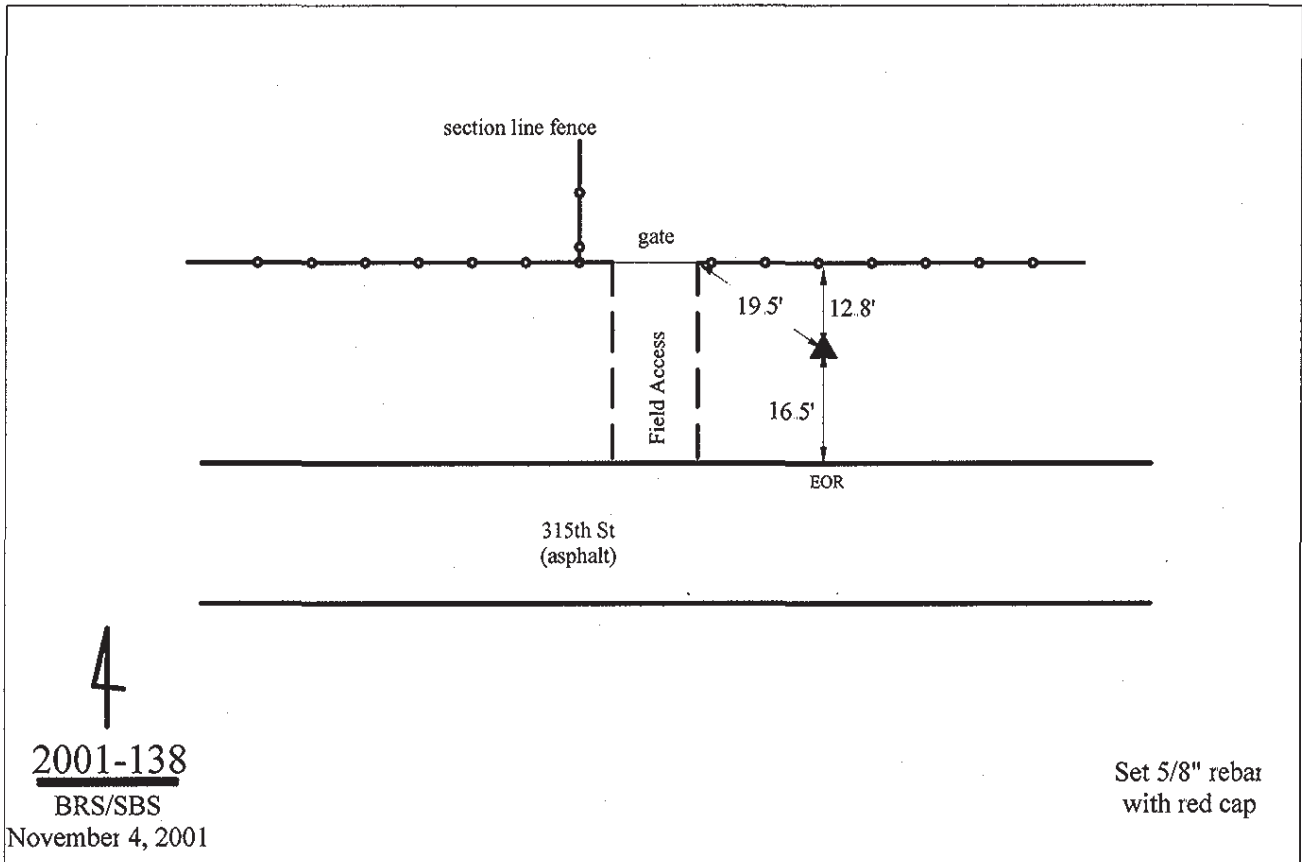
Latitude: 42-19-44.434020 N      Longitude: 91-17-09.391330 W

Theta: 1-30-02.04      Combination Factor: 0.99992009

Designation: **PHOTOGRAMMETRIC SURVEY MARKER**

**Monument Type:** 5/8" x 30" deformed rebar with red plastic cap

**Remarks:** Control point set for road project "D 47 East"



2001-138

BRS/SBS

November 4, 2001

Set 5/8" rebar  
with red cap