

Des Moines County, Iowa
Iowa South Zone (1402)
Horiz. Datum: **NAD83(NA2011)**
Vert. Datum: NAVD 1988
US Survey Feet
2012

Point Name: **241 (Replaced by 2012-315)**

Designation: ~~1999-241 Des Moines County GPS Control Pt. (Set by ASI in 1999)~~

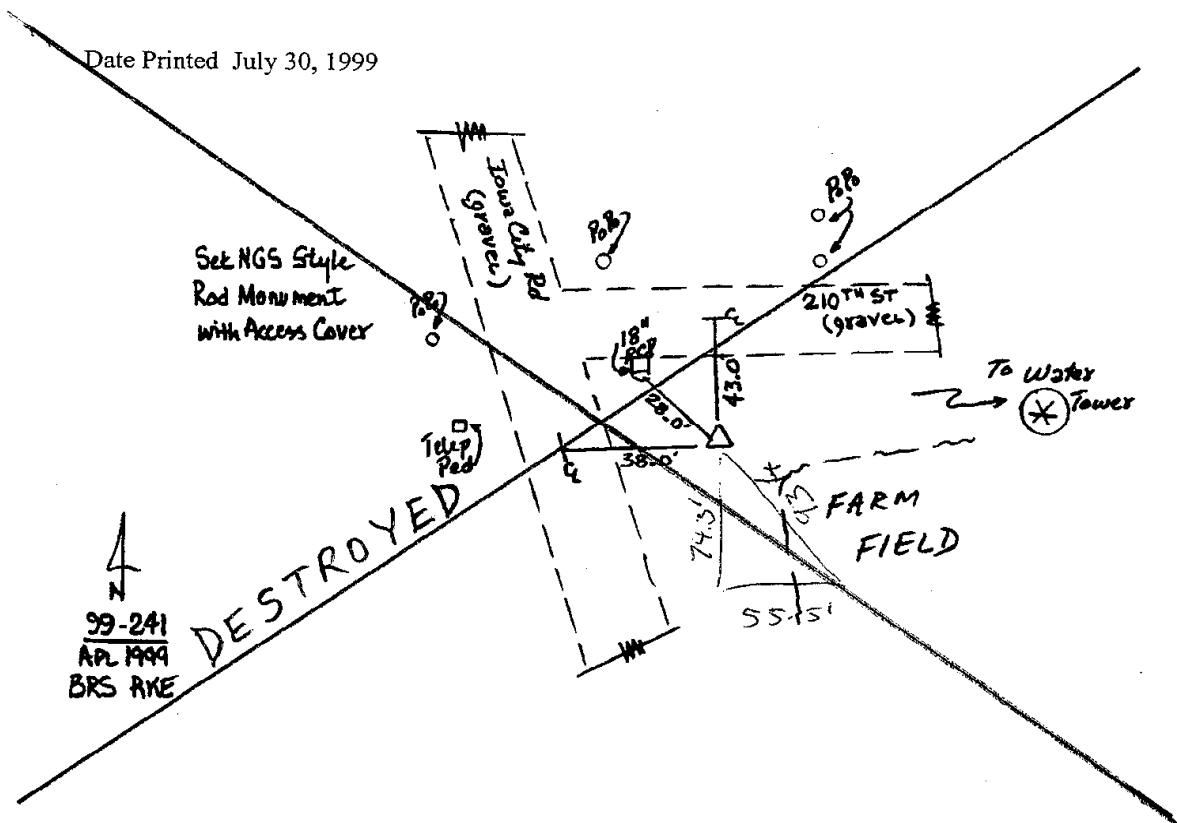
Northing: ~~367708.87~~sft Easting: ~~2275567.54~~sft

Orthometric Height: ~~773.72~~sft Ellipsoid Height: ~~665.27~~sft **Geoid96C**

Latitude: ~~N40°59'10.370528"~~ Longitude: ~~W91°11'56.819007"~~

Mapping Angle: ~~1°30'56"~~ Combination Scale Factor: **0.99992353**

Monument Type: ~~Berntsen Top Security Rod Monument with a 2-1/2" dia. domed survey cap and permanent magnet encased in a 5" dia. PVC pipe with a NGS style aluminum access cover.~~



This document was prepared by DCI and GBC for use by Des Moines County, Iowa.