

Des Moines County, Iowa

Zone 14RCS Zone 14 - Burlington TM

Horiz. Datum: **NAD 83 (NA2011)**

Vert. Datum: **NAVD88**

US Survey Feet

2017

Point Name: 268

Northing: 6446947.697 sft

Easting: 24562545.12 sft

Orthometric Height: 533.91 sft

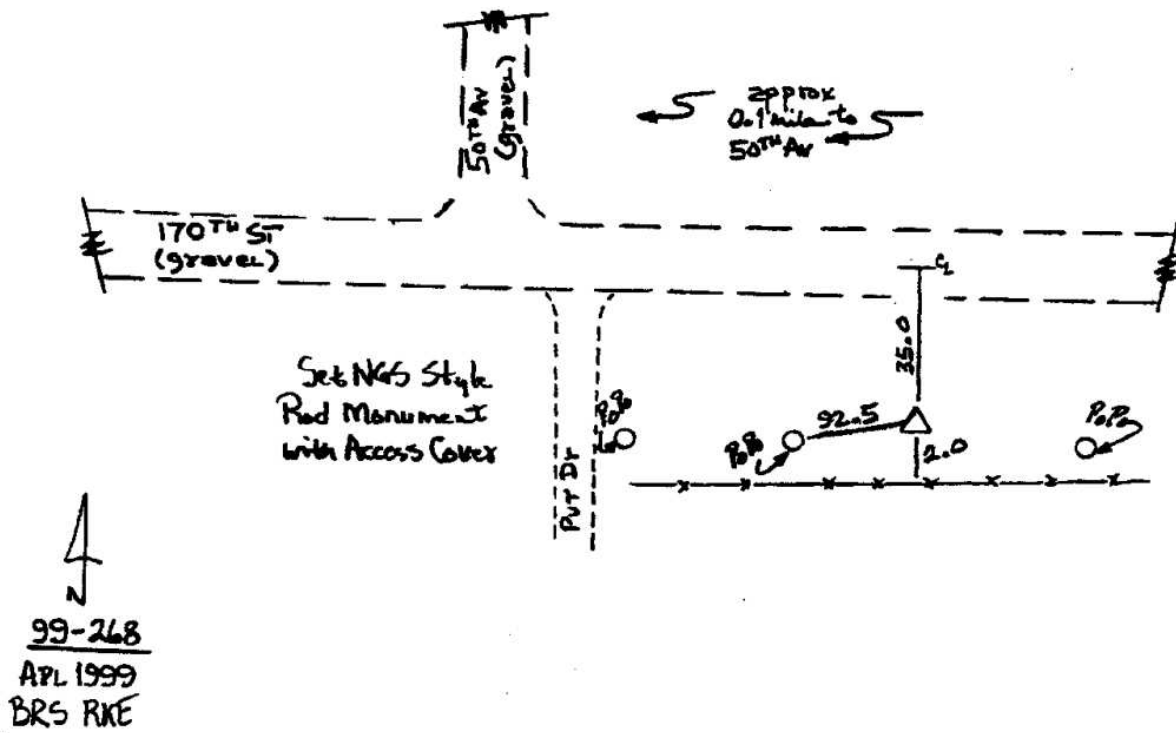
Ellipsoid Height: 425.153 sft

Latitude: N40°55'39.32880"

Longitude: W91°01'25.19925"

Mapping Angle: 00° 08' 54"

Combination Scale Factor: 1.000002



SCHULZ MYRON JR REVOCABLE TRUST 1/2 INT & DOROTHY L REVOCABLE TRUST 1/2 INT

170TH ST



SCHULZ JOHN C REVOCABLE TRUST TRUSTEE 1/2 INT & SCHULZ BARBARA G REVOCABLE TRUST TRUSTEE 1/2 INT