

Des Moines County, Iowa

Zone 1aRCS Zone 14 - Burlington TM

Horiz. Datum: **NAD 83 (NA2011)**

Vert. Datum: **NAVD88**

US Survey Feet

2017

Point Name: 275

Northing: 6481635.851 sft

Easting: 24576414.56 sft

Orthometric Height: 526.07 sft

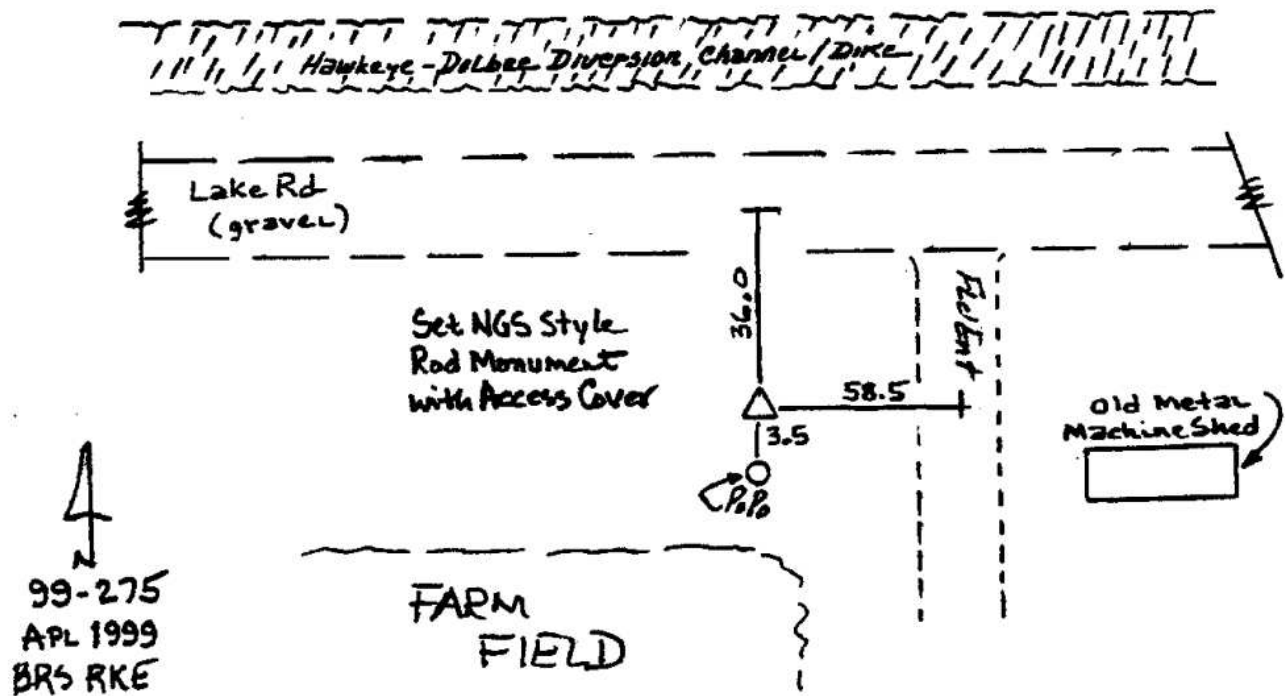
Ellipsoid Height: 417.495 sft

Latitude: N41°01'21.66686"

Longitude: W90°58'23.08595"

Mapping Angle: 00° 10' 54"

Combination Scale Factor: 1.000005



TWO RIVERS LEVEE AND DRAINAGE DISTRICT

TWO RIVERS LEVEE AND DRAINAGE DISTRICT

DES MOINES COUNTY

TWO RIVERS LEVEE AND DRAINAGE DISTRICT

LAKE RD



BUHMEYER CHARLES & MARY ANNE

BUHMEYER CHARLES & MARY ANNE