

GPS SURVEY MARK DESCRIPTION

GIS MAPPING BY:
THE SIDWELL COMPANY
WEST CHICAGO, ILLINOIS

THE OFFICE OF THE
COUNTY ENGINEER
DICKINSON COUNTY, IOWA

DESIGNATION 1003819 4 **GPS NO.** 8002 **COUNTY** DICKINSON **STATE** IOWA
LOCATED IN SECTION 19 **TWP** 100 N **RANGE** 38 W **USGS QUAD MAP** HARRIS
THE STATION IS
SOUTHEASTERLY FROM THE INTERSECTION OF 120TH STREET AND 100TH AVENUE.

MARK BERNTSEN MONUMENT WITH 2-1/2" ALUMINUM DISK ON ROD WITH 6" ACCESS COVER

MARK EXISTING **VALUES AS PUBLISHED BY** Patrick Engineering Inc. **DATE** August, 2002
 MARK SET **VALUES ESTABLISHED BY**

HORIZONTAL VALUES ORIGINATED ON ORDER "B" IOWA HIGH ACCURACY REFERENCE NETWORK (HARN) CONTROL ESTABLISHED BY THE NATIONAL GEODETIC SURVEY AND BASED ON THE NORTH AMERICAN DATUM OF 1983, 1996 ADJUSTMENT.

LATITUDE NORTH 43° 28' 26.321191"
LONGITUDE WEST 95° 23' 15.040012"
ELLIPSOID HEIGHT (meter) 427.666 * (Based on GEOID99 Model)

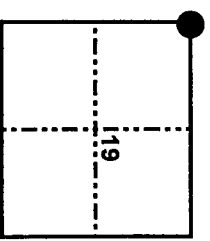
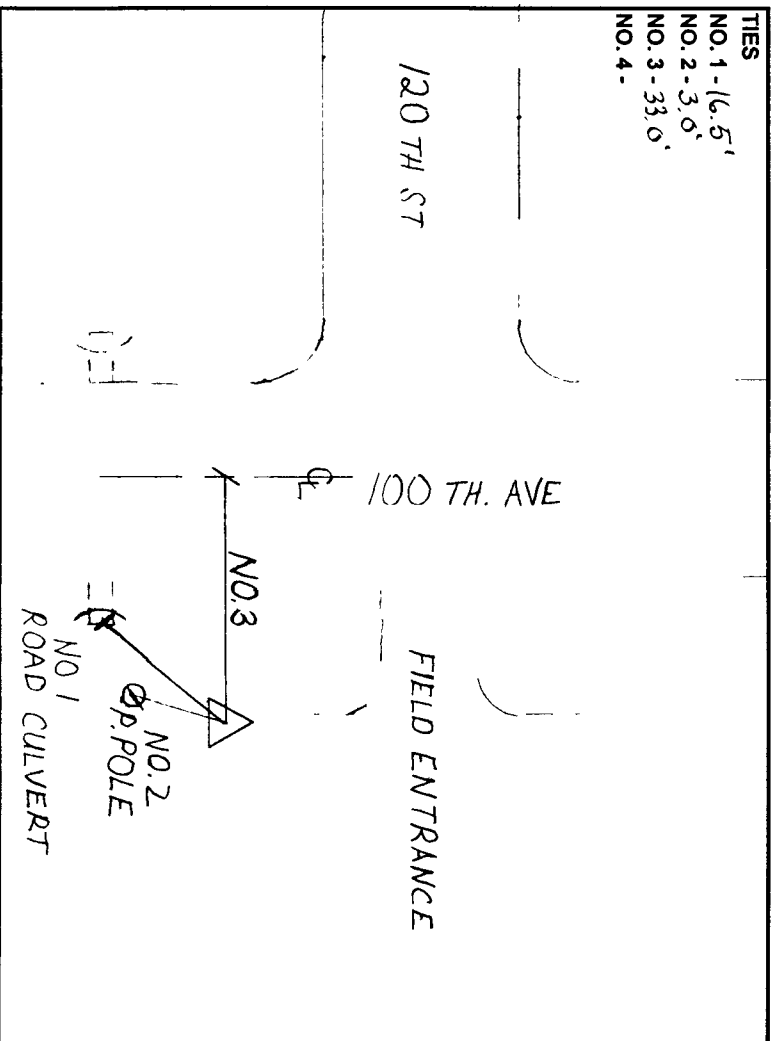
IOWA COORDINATE SYSTEM, NORTH ZONE

COORDINATES (US FEET)	CONVERGENCE ANGLE	<u>-1° 16' 45.3"</u>
NORTHING (Y)	SCALE FACTOR	<u>0.999977</u>
EASTING (X)	COORDINATES (METERS)	NORTHING (Y)
<u>4005631.00</u>	EASTING (X)	<u>1220979.731</u>
<u>4420216.63</u>		<u>1347284.723</u>

VERTICAL VALUES ORIGINATED ON VERTICAL CONTROL ESTABLISHED BY THE NATIONAL GEODETIC SURVEY AND/OR THE U.S. GEOLOGICAL SURVEY AND BASED ON THE NORTH AMERICAN VERTICAL DATUM OF 1988.

ELEVATION (US FEET) 1492.58 **ELEVATION (METERS)** 454.939

TIES
 NO. 1 - 16.5'
 NO. 2 - 3.0'
 NO. 3 - 33.0'
 NO. 4 -



SECTION MAP

SKETCH
BY CCS

PATRICK 09-2002