

GPS SURVEY MARK DESCRIPTION

GIS MAPPING BY:
THE SIDWELL COMPANY
 WEST CHICAGO, ILLINOIS

THE OFFICE OF THE
 COUNTY ENGINEER
 DICKINSON COUNTY, IOWA

DESIGNATION 993818 3 GPS NO. 8004 COUNTY DICKINSON STATE IOWA
 LOCATED IN SECTION 18 TWP 99 N RANGE 38 W USGS QUAD MAP HARRIS
 THE STATION IS _____
 AT THE NORTHEAST CORNER OF THE INTERSECTION BETWEEN 180TH STREET AND 100TH AVENUE. _____

MARK BERNTSEN MONUMENT WITH 2-1/2" ALUMINUM DISK ON ROD WITH 6" ACCESS COVER

MARK EXISTING VALUES AS PUBLISHED BY _____
 MARK SET VALUES ESTABLISHED BY Patrick Engineering Inc. DATE August, 2002

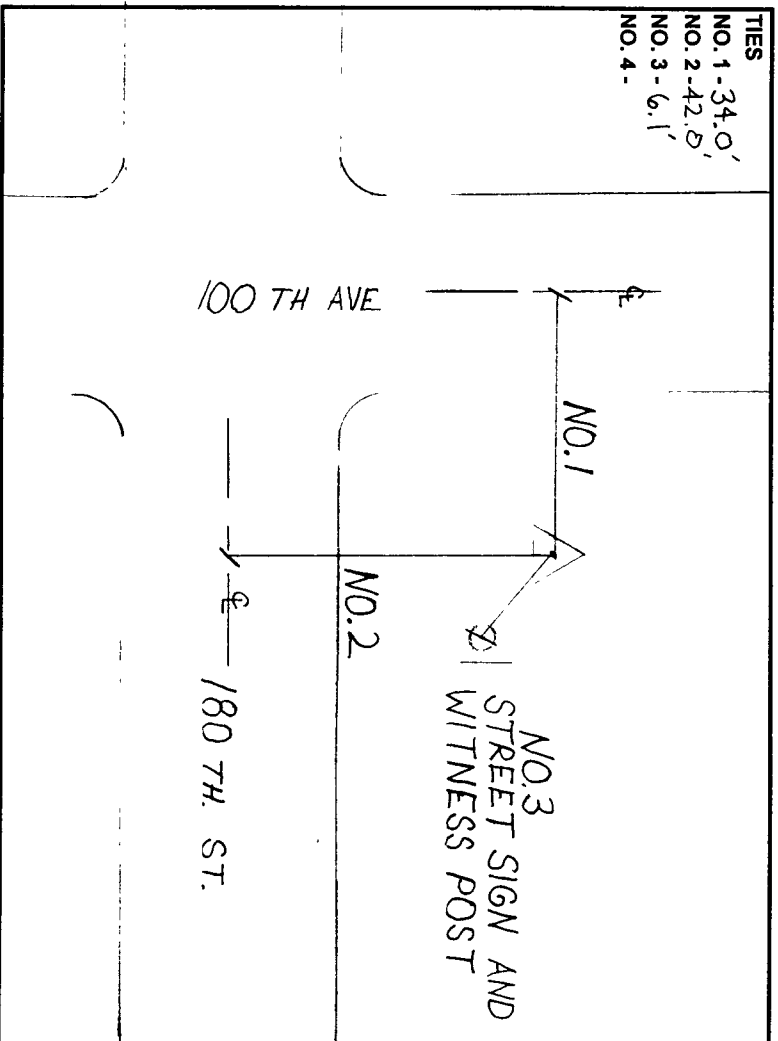
HORIZONTAL VALUES ORIGINATED ON ORDER "B" IOWA HIGH ACCURACY REFERENCE NETWORK (HARN) CONTROL ESTABLISHED BY THE NATIONAL GEODETIC SURVEY AND BASED ON THE NORTH AMERICAN DATUM OF 1983, 1996 ADJUSTMENT.

LATITUDE NORTH 43° 23' 09.127553"
 LONGITUDE WEST 95° 23' 14.803825"
 ELLIPSOID HEIGHT (meter) 433.614 * (Based on GEOID99 Model)

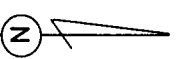
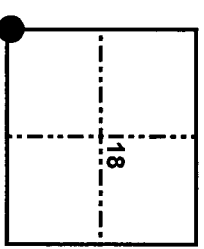
IOWA COORDINATE SYSTEM, NORTH ZONE	CONVERGENCE ANGLE	<u>-1° 16' 45.14"</u>
COORDINATES (US FEET)	SCALE FACTOR	<u>0.999956</u>
NORTHING (Y)	COORDINATES (METERS)	<u>1211192.675</u>
EASTING (X)	NORTHING (Y)	<u>1347071.488</u>
	EASTING (X)	<u>4419517.04</u>

VERTICAL VALUES ORIGINATED ON VERTICAL CONTROL ESTABLISHED BY THE NATIONAL GEODETIC SURVEY AND/OR THE U.S. GEOLOGICAL SURVEY AND BASED ON THE NORTH AMERICAN VERTICAL DATUM OF 1988.

ELEVATION (US FEET) 1512.77 ELEVATION (METERS) 461.093



TIES
 NO. 1 - 34.0'
 NO. 2 - 42.0'
 NO. 3 - 6.1'
 NO. 4 -



SKETCH BY CCS

PATRICK 09-2002