

**GPS SURVEY MARK DESCRIPTION**

GIS MAPPING BY:  
 THE SIDWELL COMPANY  
 WEST CHICAGO, ILLINOIS

THE OFFICE OF THE  
 COUNTY ENGINEER  
 DICKINSON COUNTY, IOWA

DESIGNATION 983819 4 GPS NO. 8006 COUNTY DICKINSON STATE IOWA  
 LOCATED IN SECTION 19 TWP 98 N RANGE 38 W USGS QUAD MAP MAY CITY  
 TO REACH THE STATION FROM THE INTERSECTION BETWEEN 240TH STREET AND 100TH AVENUE: HEAD EAST ON 240TH STREET FOR 0.1 MILE TO THE STATION ON THE RIGHT.

MARK BERNTSEN MONUMENT WITH 2-1/2" ALUMINUM DISK ON ROD WITH 6" ACCESS COVER  
 MARK EXISTING  VALUES AS PUBLISHED BY Patrick Engineering Inc. DATE August, 2002  
 MARK SET  VALUES ESTABLISHED BY

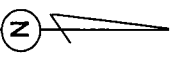
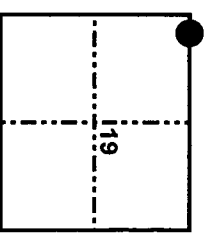
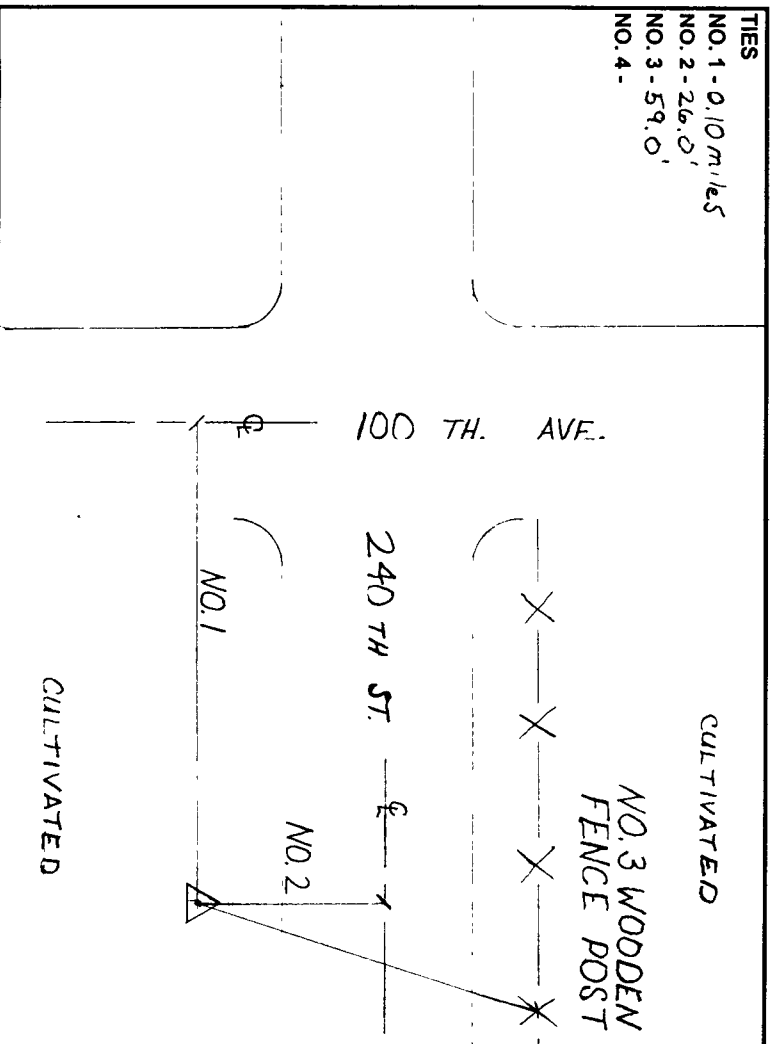
HORIZONTAL VALUES ORIGINATED ON ORDER "B" IOWA HIGH ACCURACY REFERENCE NETWORK (HARN) CONTROL ESTABLISHED BY THE NATIONAL GEODETIC SURVEY AND BASED ON THE NORTH AMERICAN DATUM OF 1983, 1996 ADJUSTMENT.

LATITUDE NORTH 43° 17' 54.896380"  
 LONGITUDE WEST 95° 23' 09.609744"  
 ELLIPSOID HEIGHT (meter) 411.039 \* (Based on GEOID99 Model)

IOWA COORDINATE SYSTEM, NORTH ZONE  
 CONVERGENCE ANGLE -1° 16' 41.62"  
 SCALE FACTOR 0.999942  
 COORDINATES (US FEET)  
 NORTHING (Y) 3941904.40 NORTHING (Y) 1201494.864  
 EASTING (X) 4419190.77 EASTING (X) 1346972.041

VERTICAL VALUES ORIGINATED ON VERTICAL CONTROL ESTABLISHED BY THE NATIONAL GEODETIC SURVEY AND/OR THE U.S. GEOLOGICAL SURVEY AND BASED ON THE NORTH AMERICAN VERTICAL DATUM OF 1988.

ELEVATION (US FEET) 1439.51 ELEVATION (METERS) 438.764



SKETCH BY CCS  
 PATRICK 09-2002