

GPS SURVEY MARK DESCRIPTION

GIS MAPPING BY:
 THE SIDWELL COMPANY
 WEST CHICAGO, ILLINOIS

THE OFFICE OF THE
 COUNTY ENGINEER
 DICKINSON COUNTY, IOWA

DESIGNATION 993816 2 GPS NO. 8010 COUNTY DICKINSON STATE IOWA
 LOCATED IN SECTION 16 TWP 99 N RANGE 38 W USGS QUAD MAP LAKE PARK
 TO REACH THE STATION
 FROM THE INTERSECTION OF 180TH STREET AND 130TH AVENUE; HEAD WEST ON 180TH STREET FOR 0.1 MILE TO THE
 STATION ON THE RIGHT.

MARK

BERNTSEN MONUMENT WITH 2-1/2" ALUMINUM DISK ON ROD WITH 6" ACCESS COVER

MARK EXISTING VALUES AS PUBLISHED BY
 MARK SET VALUES ESTABLISHED BY

Patrick Engineering Inc.

DATE August, 2002

HORIZONTAL VALUES ORIGINATED ON ORDER "B" IOWA HIGH ACCURACY REFERENCE NETWORK (HARN) CONTROL ESTABLISHED BY THE NATIONAL GEODETIC SURVEY AND BASED ON THE NORTH AMERICAN DATUM OF 1983, 1996 ADJUSTMENT.

LATITUDE NORTH 43° 23' 10.311417"
 LONGITUDE WEST 95° 19' 52.644505"
 ELLIPSOID HEIGHT (meter) 423.742 * (Based on GEOID99 Model)

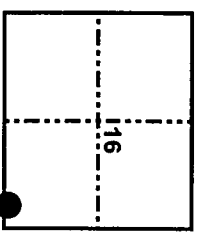
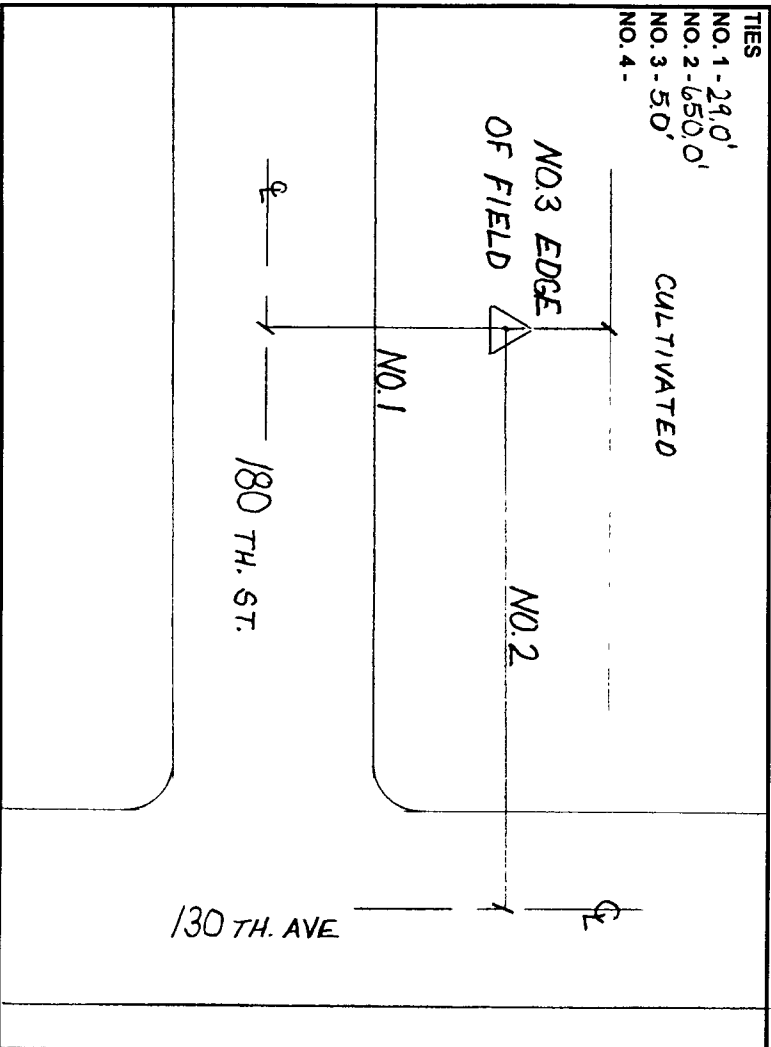
IOWA COORDINATE SYSTEM, NORTH ZONE

COORDINATES (US FEET)		CONVERGENCE ANGLE	<u>-1° 14' 28.13"</u>
NORTHING (Y)	<u>3973512.82</u>	SCALE FACTOR	<u>0.999958</u>
EASTING (X)	<u>4434444.84</u>	COORDINATES (METERS)	
		NORTHING (Y)	<u>1211129.130</u>
		EASTING (X)	<u>1351621.490</u>

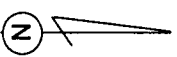
VERTICAL VALUES ORIGINATED ON VERTICAL CONTROL ESTABLISHED BY THE NATIONAL GEODETIC SURVEY AND/OR THE U.S. GEOLOGICAL SURVEY AND BASED ON THE NORTH AMERICAN VERTICAL DATUM OF 1988.

ELEVATION (US FEET)	<u>1480.79</u>	ELEVATION (METERS)	<u>451.346</u>
---------------------	----------------	--------------------	----------------

TIES
 NO. 1 - 24.0'
 NO. 2 - 650.0'
 NO. 3 - 5.0'
 NO. 4 -



SECTION MAP



SKETCH BY CCS
 PATRICK 09-2002