

GPS SURVEY MARK DESCRIPTION

GIS MAPPING BY:
 THE SIDWELL COMPANY
 WEST CHICAGO, ILLINOIS

THE OFFICE OF THE
 COUNTY ENGINEER
 DICKINSON COUNTY, IOWA

DESIGNATION 983804 1 GPS NO. 8011 COUNTY DICKINSON STATE IOWA
 LOCATED IN SECTION 4 TWP 98 N RANGE 38 W USGS QUAD MAP LAKE PARK SE
 THE STATION IS _____
 AT THE SOUTHWEST CORNER OF THE INTERSECTION BETWEEN 210TH STREET AND 130TH AVENUE.

MARK BERNTSEN MONUMENT WITH 2-1/2" ALUMINUM DISK ON ROD WITH 6" ACCESS COVER

MARK EXISTING VALUES AS PUBLISHED BY _____
 MARK SET VALUES ESTABLISHED BY Patrick Engineering Inc. DATE August, 2002

HORIZONTAL VALUES ORIGINATED ON ORDER "B" IOWA HIGH ACCURACY REFERENCE NETWORK (HARN) CONTROL ESTABLISHED BY THE NATIONAL GEODETIC SURVEY AND BASED ON THE NORTH AMERICAN DATUM OF 1983, 1996 ADJUSTMENT.

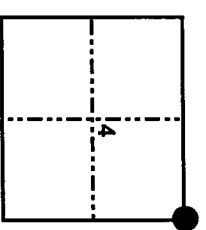
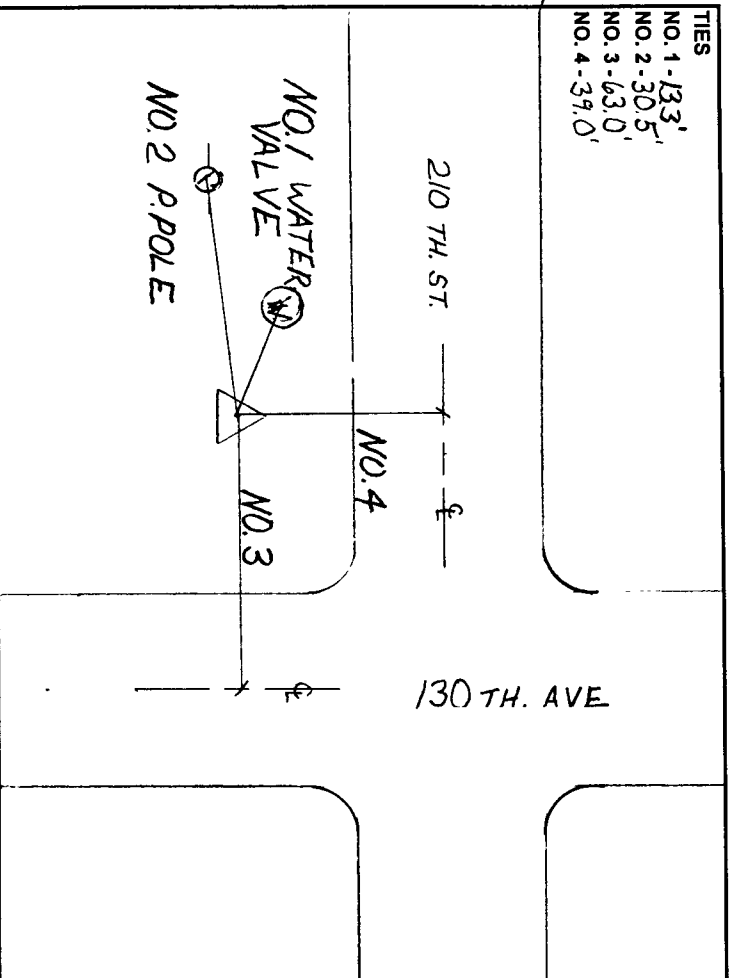
LATITUDE NORTH 43° 20' 32.071089"
 LONGITUDE WEST 95° 19' 44.265047"
 ELLIPSOID HEIGHT (meter) 433.420 * (Based on GEOID99 Model)

IOWA COORDINATE SYSTEM, NORTH ZONE
 CONVERGENCE ANGLE -1° 14' 22.45"
 SCALE FACTOR 0.999947
 COORDINATES (US FEET)
 NORTHING (Y) 3957481.03 COORDINATES (METERS) 1206242.630
 EASTING (X) 4434716.89 EASTING (X) 1351704.411

VERTICAL VALUES ORIGINATED ON VERTICAL CONTROL ESTABLISHED BY THE NATIONAL GEODETIC SURVEY AND/OR THE U.S. GEOLOGICAL SURVEY AND BASED ON THE NORTH AMERICAN VERTICAL DATUM OF 1988.

ELEVATION (US FEET) 1512.93 ELEVATION (METERS) 461.142

TIES
 NO. 1 - 133'
 NO. 2 - 30.5'
 NO. 3 - 63.0'
 NO. 4 - 39.0'



SECTION MAP

SKETCH
 BY CCS

PATRICK 09-2002