

GPS SURVEY MARK DESCRIPTION

GIS MAPPING BY:
 THE SIDWELL COMPANY
 WEST CHICAGO, ILLINOIS

THE OFFICE OF THE
 COUNTY ENGINEER
 DICKINSON COUNTY, IOWA

DESIGNATION 1003707 4 GPS NO. 8013 COUNTY DICKINSON STATE IOWA
 LOCATED IN SECTION 7 TWP 100 N RANGE 37 W USGS QUAD MAP LAKE PARK
 TO REACH THE STATION FROM THE INTERSECTION OF 100TH STREET AND 140TH AVENUE: HEAD EAST ON 100TH STREET FOR 2.0 MILES TO THE STATION ON THE RIGHT.

MARK BERNTSEN MONUMENT WITH 2-1/2" ALUMINUM DISK ON ROD WITH 6" ACCESS COVER

MARK EXISTING VALUES AS PUBLISHED BY Patrick Engineering Inc. DATE August, 2002
 MARK SET VALUES ESTABLISHED BY

HORIZONTAL VALUES ORIGINATED ON ORDER "B" IOWA HIGH ACCURACY REFERENCE NETWORK (HARN) CONTROL ESTABLISHED BY THE NATIONAL GEODETIC SURVEY AND BASED ON THE NORTH AMERICAN DATUM OF 1983, 1996 ADJUSTMENT.

LATITUDE NORTH 43° 30' 01.611066"
 LONGITUDE WEST 95° 16' 08.168096"
 ELLIPSOID HEIGHT (meter) 420.372 * (Based on GEOID99 Model)

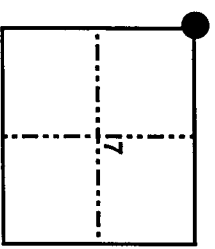
IOWA COORDINATE SYSTEM, NORTH ZONE CONVERGENCE ANGLE -1° 11' 55.99"

COORDINATES (US FEET)		SCALE FACTOR	<u>0.999985</u>
NORTHING (Y)	<u>4014796.98</u>	COORDINATES (METERS)	
EASTING (X)	<u>4451889.23</u>	NORTHING (Y)	<u>1223712.567</u>
		EASTING (X)	<u>1356938.551</u>

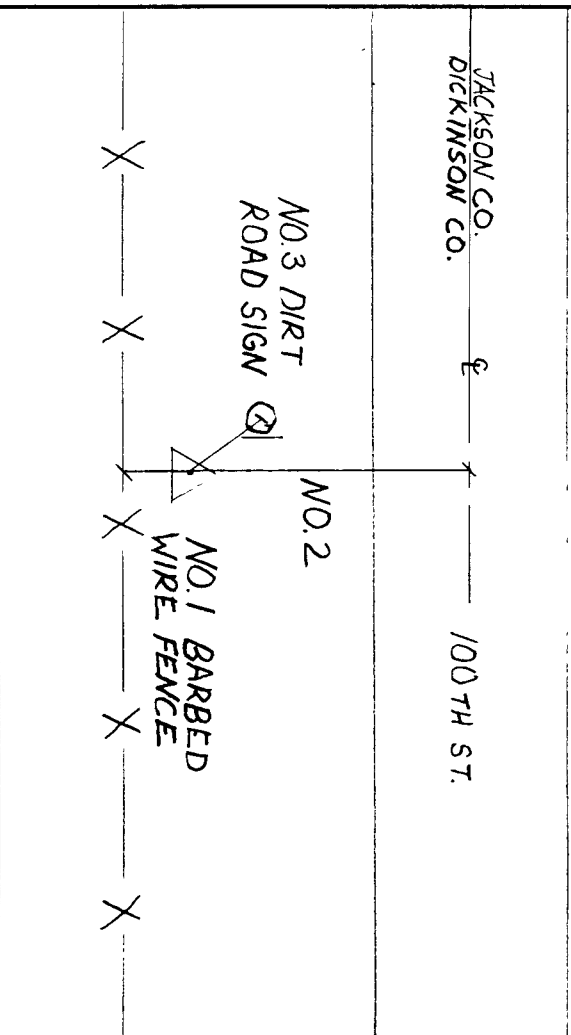
VERTICAL VALUES ORIGINATED ON VERTICAL CONTROL ESTABLISHED BY THE NATIONAL GEODETIC SURVEY AND/OR THE U.S. GEOLOGICAL SURVEY AND BASED ON THE NORTH AMERICAN VERTICAL DATUM OF 1988.

ELEVATION (US FEET) 1469.30 ELEVATION (METERS) 447.844

TIES
 NO. 1 - 1.3'
 NO. 2 - 31.0'
 NO. 3 - 10.0'
 NO. 4 -



SECTION MAP



SKETCH BY CCS

PATRICK 09-2002