

GPS SURVEY MARK DESCRIPTION

GIS MAPPING BY:
 THE SIDWELL COMPANY
 WEST CHICAGO, ILLINOIS

THE OFFICE OF THE
 COUNTY ENGINEER
 DICKINSON COUNTY, IOWA

DESIGNATION 983706 4 GPS NO. 8017 COUNTY DICKINSON STATE IOWA
 LOCATED IN SECTION 6 TWP 98 N RANGE 37 W USGS QUAD MAP LAKE PARK SE
 THE STATION IS EAST OF THE CENTERLINE OF 160TH AVENUE AND APPROXIMATELY 195.0 FEET SOUTH OF THE CENTERLINE OF 210TH STREET.

MARK BERNTSEN MONUMENT WITH 2-1/2" ALUMINUM DISK ON ROD WITH 6" ACCESS COVER

MARK EXISTING VALUES AS PUBLISHED BY Patrick Engineering Inc. DATE August, 2002
 MARK SET VALUES ESTABLISHED BY

HORIZONTAL VALUES ORIGINATED ON ORDER "B" IOWA HIGH ACCURACY REFERENCE NETWORK (HARN) CONTROL ESTABLISHED BY THE NATIONAL GEODETIC SURVEY AND BASED ON THE NORTH AMERICAN DATUM OF 1983, 1996 ADJUSTMENT.

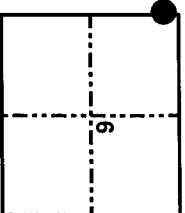
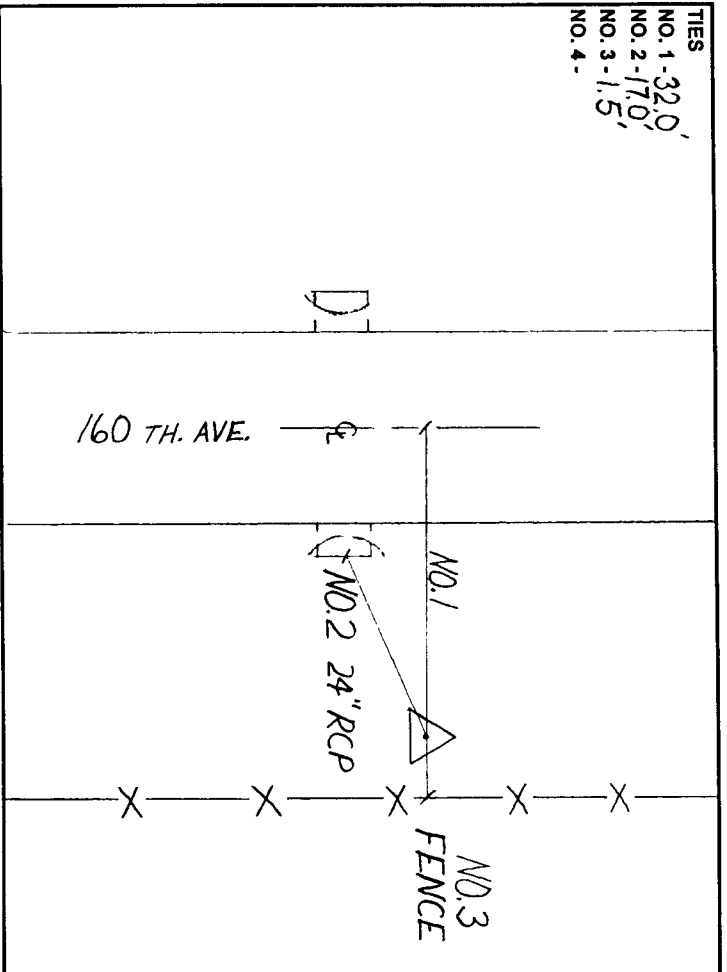
LATITUDE NORTH 43° 20' 30.719297"
 LONGITUDE WEST 95° 16' 08.941246"
 ELLIPSOID HEIGHT (meter) 420.941 * (Based on GEOID99 Model)

IOWA COORDINATE SYSTEM, NORTH ZONE
 CONVERGENCE ANGLE -1° 11' 56.52"
 SCALE FACTOR 0.999949
 COORDINATES (METERS)
 NORTHING (Y) 1206097.716
 EASTING (X) 1356552.497

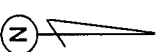
VERTICAL VALUES ORIGINATED ON VERTICAL CONTROL ESTABLISHED BY THE NATIONAL GEODETIC SURVEY AND/OR THE U.S. GEOLOGICAL SURVEY AND BASED ON THE NORTH AMERICAN VERTICAL DATUM OF 1988.

ELEVATION (US FEET) 1472.40 ELEVATION (METERS) 448.788

TIES
 NO. 1 - 32.0'
 NO. 2 - 17.0'
 NO. 3 - 1.5'
 NO. 4 -



SECTION MAP



SKETCH BY CCS

PATRICK 09-2002