

GPS SURVEY MARK DESCRIPTION

GIS MAPPING BY:
THE SIDWELL COMPANY
 WEST CHICAGO, ILLINOIS

THE OFFICE OF THE
 COUNTY ENGINEER
 DICKINSON COUNTY, IOWA

DESIGNATION 1003722 3 GPS NO. 8020 COUNTY DICKINSON STATE IOWA
 LOCATED IN SECTION 22 TWP 100 N RANGE 37 W USGS QUAD MAP OKOBOJI
 TO REACH THE STATION FROM THE INTERSECTION BETWEEN 190TH AVENUE AND 120TH STREET: HEAD SOUTH ON 190TH AVENUE 0.6 MILE TO THE STATION ON THE LEFT.

MARK BERNTSEN MONUMENT WITH 2-1/2" ALUMINUM DISK ON ROD WITH 6" ACCESS COVER
 MARK EXSTING VALUES AS PUBLISHED BY Patrick Engineering Inc. DATE August, 2002
 MARK SET VALUES ESTABLISHED BY

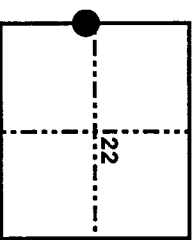
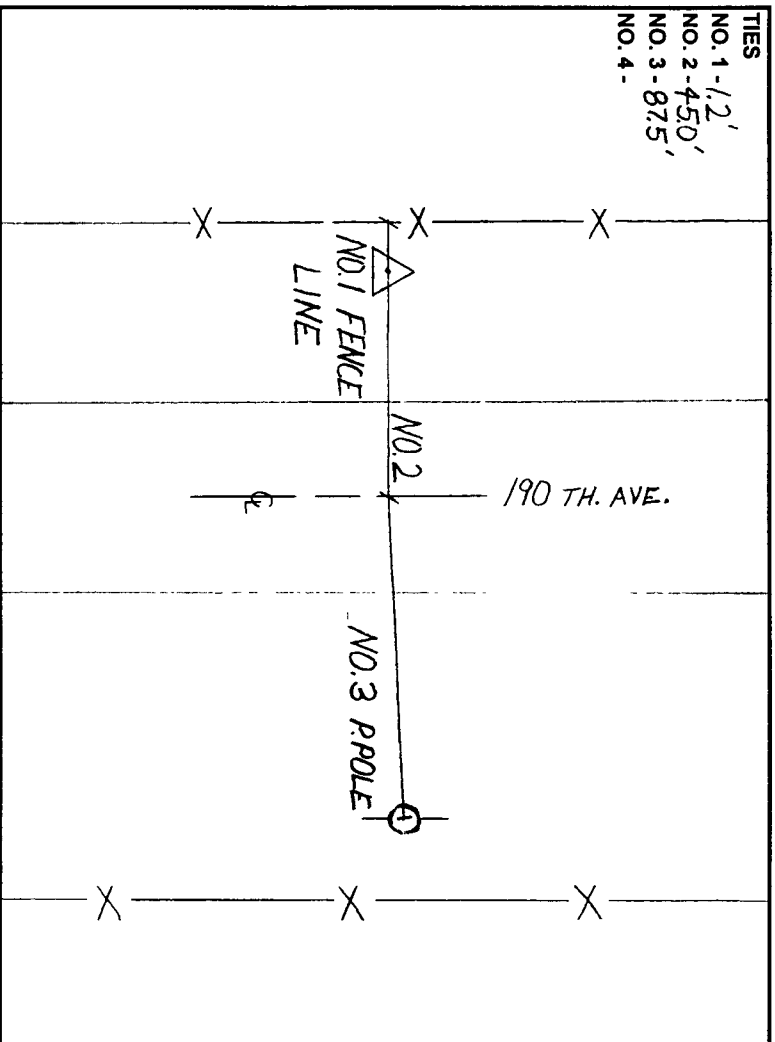
HORIZONTAL VALUES ORIGINATED ON ORDER "B" IOWA HIGH ACCURACY REFERENCE NETWORK (HARN) CONTROL ESTABLISHED BY THE NATIONAL GEODETIC SURVEY AND BASED ON THE NORTH AMERICAN DATUM OF 1983, 1996 ADJUSTMENT.

LATITUDE NORTH 43° 27' 56.891151"
 LONGITUDE WEST 95° 12' 38.370636"
 ELLIPSOID HEIGHT (meter) 401.547 * (Based on GEOID99 Model)

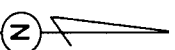
IOWA COORDINATE SYSTEM, NORTH ZONE
 CONVERGENCE ANGLE -1° 09' 33.8"
 SCALE FACTOR 0.9999980
 COORDINATES (US FEET)
 NORTHING (Y) 4001852.59 COORDINATES (METERS)
 EASTING (X) 4467094.51 NORTHING (Y) 1219767.109
 EASTING (X) 1361573.130

VERTICAL VALUES ORIGINATED ON VERTICAL CONTROL ESTABLISHED BY THE NATIONAL GEODETIC SURVEY AND/OR THE U.S. GEOLOGICAL SURVEY AND BASED ON THE NORTH AMERICAN VERTICAL DATUM OF 1988.

ELEVATION (US FEET) 1408.03 ELEVATION (METERS) 429.168



SECTION MAP



TIES
 NO. 1 - 1/2'
 NO. 2 - 450'
 NO. 3 - 87.5'
 NO. 4 -

SKETCH BY CCS

PATRICK 09-2002