

GPS SURVEY MARK DESCRIPTION

GIS MAPPING BY:
 THE SIDWELL COMPANY
 WEST CHICAGO, ILLINOIS

THE OFFICE OF THE
 COUNTY ENGINEER
 DICKINSON COUNTY, IOWA

DESIGNATION 993721 1 GPS NO. 8022 COUNTY DICKINSON STATE IOWA
 LOCATED IN SECTION 21 TWP 99 N RANGE 37 W USGS QUAD MAP OKOBOJI
 THE STATION IS _____
 AT THE SOUTHWEST CORNER OF THE INTERSECTION OF 180TH STREET AND 190TH AVENUE.

MARK BERNTSEN MONUMENT WITH 2-1/2" ALUMINUM DISK ON ROD WITH 6" ACCESS COVER

MARK EXISTING VALUES AS PUBLISHED BY _____ DATE August, 2002
 MARK SET VALUES ESTABLISHED BY Patrick Engineering Inc.

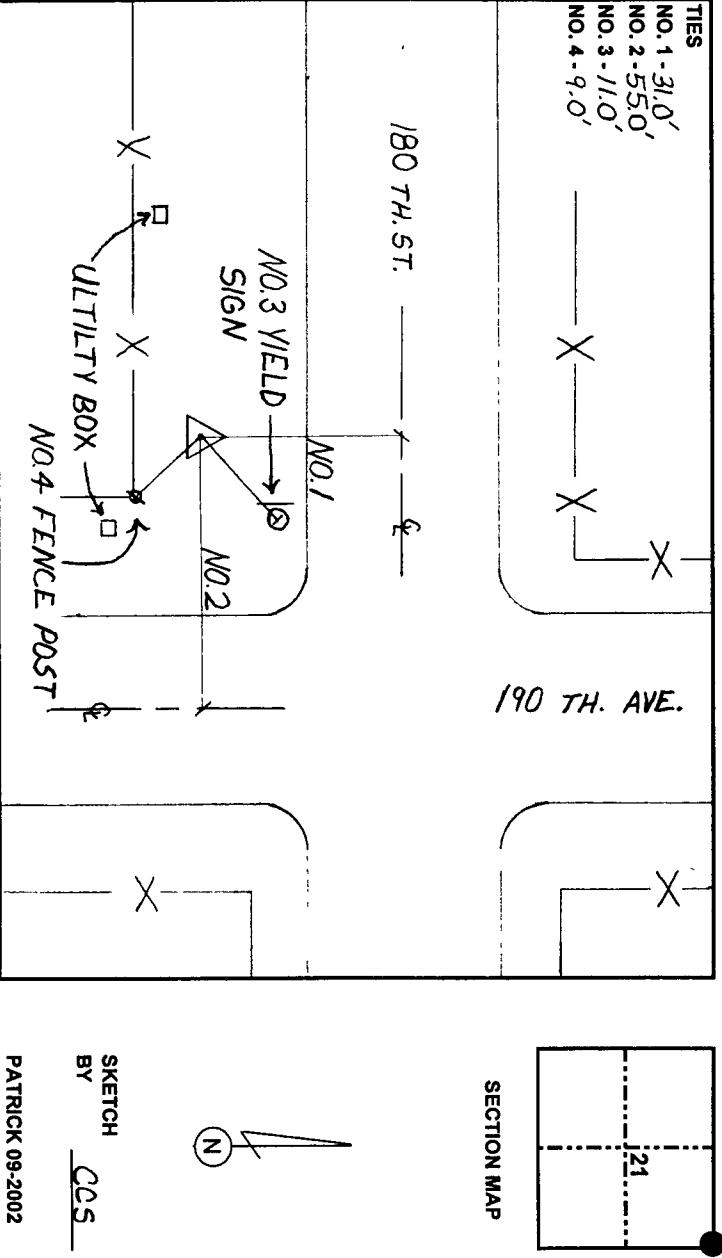
HORIZONTAL VALUES ORIGINATED ON ORDER "B" IOWA HIGH ACCURACY REFERENCE NETWORK (HARN) CONTROL ESTABLISHED BY THE NATIONAL GEODETIC SURVEY AND BASED ON THE NORTH AMERICAN DATUM OF 1983, 1996 ADJUSTMENT.

LATITUDE NORTH 43° 23' 09.241392"
 LONGITUDE WEST 95° 12' 37.339732"
 ELLIPSOID HEIGHT (meter) 417.844 * (Based on GEOID99 Model)

IOWA COORDINATE SYSTEM, NORTH ZONE
 CONVERGENCE ANGLE -1° 09' 33.1"
 SCALE FACTOR 0.999956
 COORDINATES (US FEET)
 NORTHING (Y) 3972731.19 NORTHING (METERS) 1210890.888
 EASTING (X) 4466581.30 EASTING (METERS) 1361416.703

VERTICAL VALUES ORIGINATED ON VERTICAL CONTROL ESTABLISHED BY THE NATIONAL GEODETIC SURVEY AND/OR THE U.S. GEOLOGICAL SURVEY AND BASED ON THE NORTH AMERICAN VERTICAL DATUM OF 1988.

ELEVATION (US FEET) 1462.21 ELEVATION (METERS) 445.682



SKETCH BY CCS
 PATRICK 09-2002