

GPS SURVEY MARK DESCRIPTION

GIS MAPPING BY:
 THE SIDWELL COMPANY
 WEST CHICAGO, ILLINOIS

THE OFFICE OF THE
 COUNTY ENGINEER
 DICKINSON COUNTY, IOWA

DESIGNATION 983721 1 GPS NO. 8024 COUNTY DICKINSON STATE IOWA
 LOCATED IN SECTION 21 TWP 98 N RANGE 37 W USGS QUAD MAP MILFORD
 THE STATION IS _____
 AT THE SOUTHWEST CORNER OF THE INTERSECTION BETWEEN 240TH STREET AND 190TH AVENUE.

MARK BERNTSEN MONUMENT WITH 2-1/2" ALUMINUM DISK ON ROD WITH 6" ACCESS COVER

MARK EXISTING VALUES AS PUBLISHED BY _____
 MARK SET VALUES ESTABLISHED BY Patrick Engineering Inc. DATE August, 2002

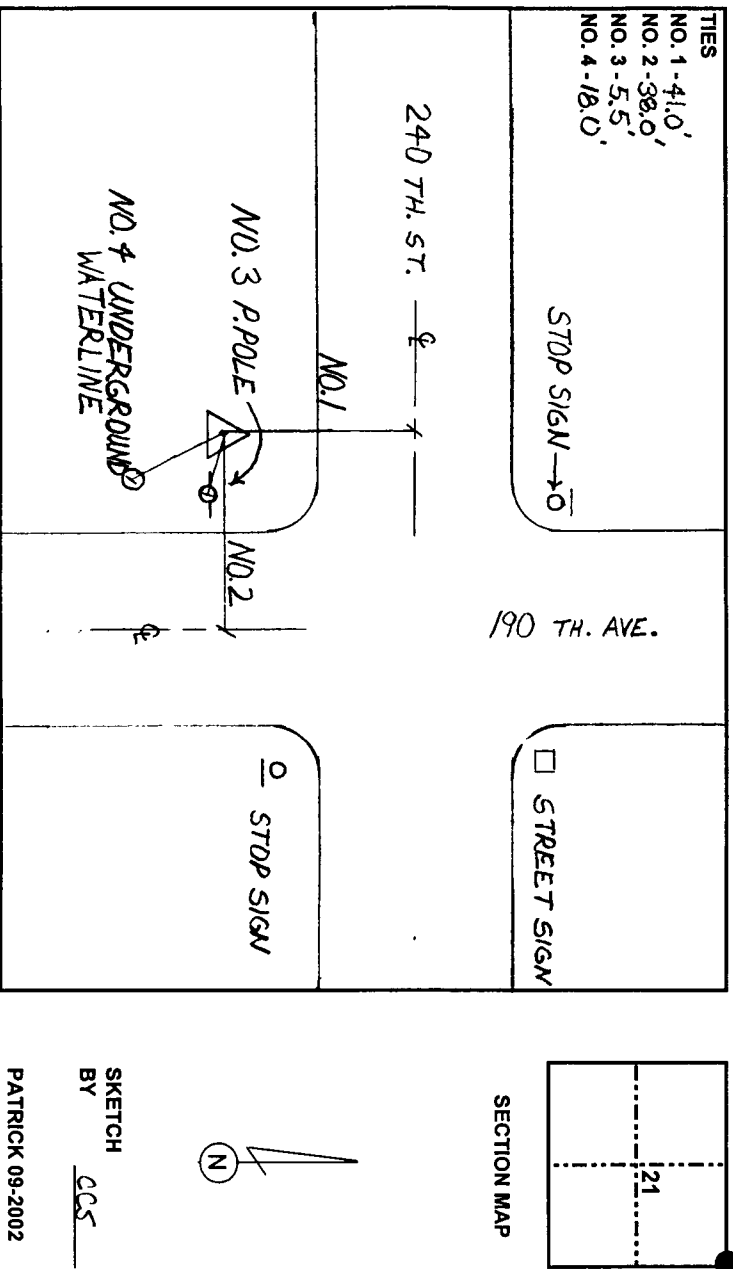
HORIZONTAL VALUES ORIGINATED ON ORDER "B" IOWA HIGH ACCURACY REFERENCE NETWORK (HARN) CONTROL ESTABLISHED BY THE NATIONAL GEODETIC SURVEY AND BASED ON THE NORTH AMERICAN DATUM OF 1983, 1996 ADJUSTMENT.

LATITUDE NORTH 43° 17' 55.244899"
 LONGITUDE WEST 95° 12' 34.112048"
 ELLIPSOID HEIGHT (meter) 413.993 * (Based on GEOID99 Model)

IOWA COORDINATE SYSTEM, NORTH ZONE CONVERGENCE ANGLE -1° 09' 30.92"
 COORDINATES (US FEET) SCALE FACTOR 0.999941
 NORTHING (Y) 3940940.37 NORTHING (Y) 1201201.027
 EASTING (X) 4466176.77 EASTING (X) 1361293.402

VERTICAL VALUES ORIGINATED ON VERTICAL CONTROL ESTABLISHED BY THE NATIONAL GEODETIC SURVEY AND/OR THE U.S. GEOLOGICAL SURVEY AND BASED ON THE NORTH AMERICAN VERTICAL DATUM OF 1988.

ELEVATION (US FEET) 1450.43 ELEVATION (METERS) 442.092



SKETCH BY CCS
 PATRICK 09-2002