

GPS SURVEY MARK DESCRIPTION

GIS MAPPING BY:
THE SIDWELL COMPANY
WEST CHICAGO, ILLINOIS

THE OFFICE OF THE
COUNTY ENGINEER
DICKINSON COUNTY, IOWA

DESIGNATION 1013633 3 **GPS NO.** 8025 **COUNTY** JACKSON **STATE** MINNESOTA
LOCATED IN SECTION 33 **TWP** 101 N **RANGE** 36 W **USGS QUAD MAP** LAKEFIELD SW
TO REACH THE STATION FROM _____
THE INTERSECTION OF 100TH STREET AND 190TH AVENUE: HEAD EAST ON 100TH STREET FOR APPROXIMATELY
2.3 MILES TO A SOUTHERLY BEND IN THE ROAD. GO STRAIGHT ON A GRASS PATH TO THE STATION ON THE LEFT..

MARK BERNTSEN MONUMENT WITH 2-1/2" ALUMINUM DISK ON ROD WITH 6" ACCESS COVER
 MARK EXISTING VALUES AS PUBLISHED BY _____
 MARK SET VALUES ESTABLISHED BY Patrick Engineering Inc. **DATE** August, 2002

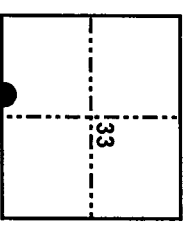
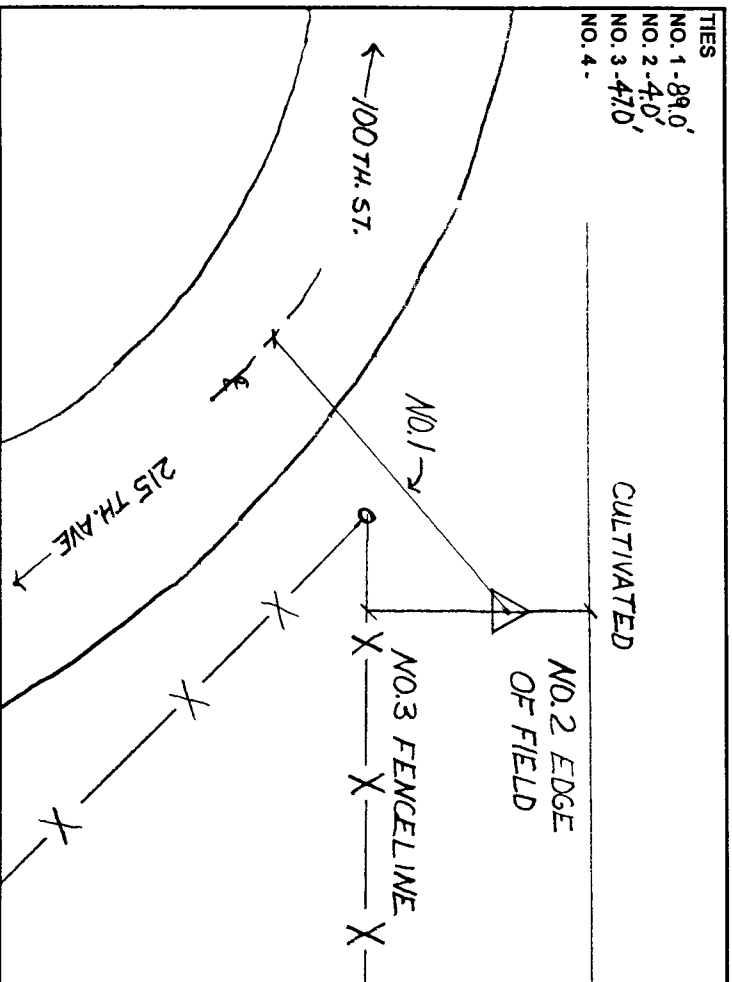
HORIZONTAL VALUES ORIGINATED ON ORDER "B" IOWA HIGH ACCURACY REFERENCE NETWORK (HARN) CONTROL ESTABLISHED BY THE NATIONAL GEODETIC SURVEY AND BASED ON THE NORTH AMERICAN DATUM OF 1983, 1996 ADJUSTMENT.

LATTITUDE NORTH 43° 30' 04.047752"
LONGITUDE WEST 95° 10' 01.364461"
ELLIPSOID HEIGHT (meter) 410.196 * (Based on GEOID99 Model)

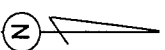
IOWA COORDINATE SYSTEM, NORTH ZONE **CONVERGENCE ANGLE** -1° 07' 47.39"
COORDINATES (US FEET) **SCALE FACTOR** 0.999987
NORTHING (Y) 4014494.26 **COORDINATES (METERS)** **NORTHING (Y)** 1223620.298
EASTING (X) 4478925.45 **EASTING (X)** 1365179.208

VERTICAL VALUES ORIGINATED ON VERTICAL CONTROL ESTABLISHED BY THE NATIONAL GEODETIC SURVEY AND/OR THE U.S. GEOLOGICAL SURVEY AND BASED ON THE NORTH AMERICAN VERTICAL DATUM OF 1988.

ELEVATION (US FEET) 1436.35 **ELEVATION (METERS)** 437.800



SECTION MAP



SKETCH
BY CCS

PATRICK 09-2002