

GPS SURVEY MARK DESCRIPTION

GIS MAPPING BY:
 THE SIDWELL COMPANY
 WEST CHICAGO, ILLINOIS

THE OFFICE OF THE
 COUNTY ENGINEER
 DICKINSON COUNTY, IOWA

DESIGNATION 1003620 3 GPS NO. 8032 COUNTY DICKINSON STATE IOWA
 LOCATED IN SECTION 20 TWP 100 N RANGE 36 W USGS QUAD MAP OKOBOJI
 THE STATION IS AT _____
 THE INTERSECTION OF HIGHWAY 276 AND 125TH STREET. THE STATION IS AT THE SOUTHWEST CORNER.

MARK BERNTSEN MONUMENT WITH 2-1/2" ALUMINUM DISK ON ROD WITH 6" ACCESS COVER
 MARK EXISTING VALUES AS PUBLISHED BY
 MARK SET VALUES ESTABLISHED BY Patrick Engineering Inc. DATE August, 2002

HORIZONTAL VALUES ORIGINATED ON ORDER "B" IOWA HIGH ACCURACY REFERENCE NETWORK (HARN) CONTROL ESTABLISHED BY THE NATIONAL GEODETIC SURVEY AND BASED ON THE NORTH AMERICAN DATUM OF 1983, 1996 ADJUSTMENT.

LATITUDE NORTH 43° 27' 59.472776"
 LONGITUDE WEST 95° 07' 29.373324"
 ELLIPSOID HEIGHT (meter) 412.382 * (Based on GEOID99 Model)

IOWA COORDINATE SYSTEM, NORTH ZONE

CONVERGENCE ANGLE

SCALE FACTOR

COORDINATES (US FEET)

COORDINATES (METERS)

NORTHING (Y) 4001664.41
 EASTING (X) 4489883.99

NORTHING (Y) 1219709.752
 EASTING (X) 1368519.377

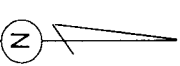
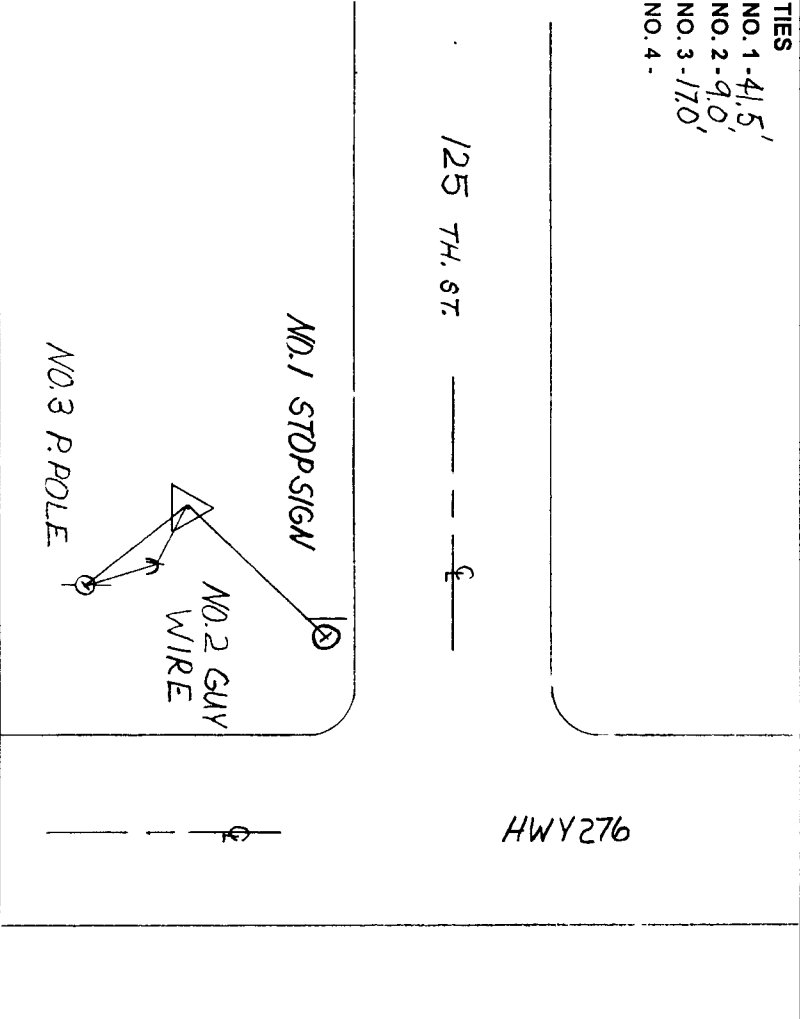
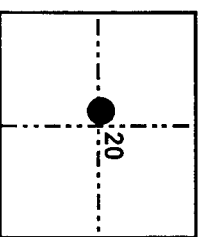
VERTICAL VALUES ORIGINATED ON VERTICAL CONTROL ESTABLISHED BY THE NATIONAL GEODETIC SURVEY AND/OR THE U.S. GEOLOGICAL SURVEY AND BASED ON THE NORTH AMERICAN VERTICAL DATUM OF 1988.

ELEVATION (US FEET) 1443.98

ELEVATION (METERS)

440.126

TIES
 NO. 1 - 41.5'
 NO. 2 - 90'
 NO. 3 - 170'
 NO. 4 -



SKETCH BY PCS

PATRICK 09-2002